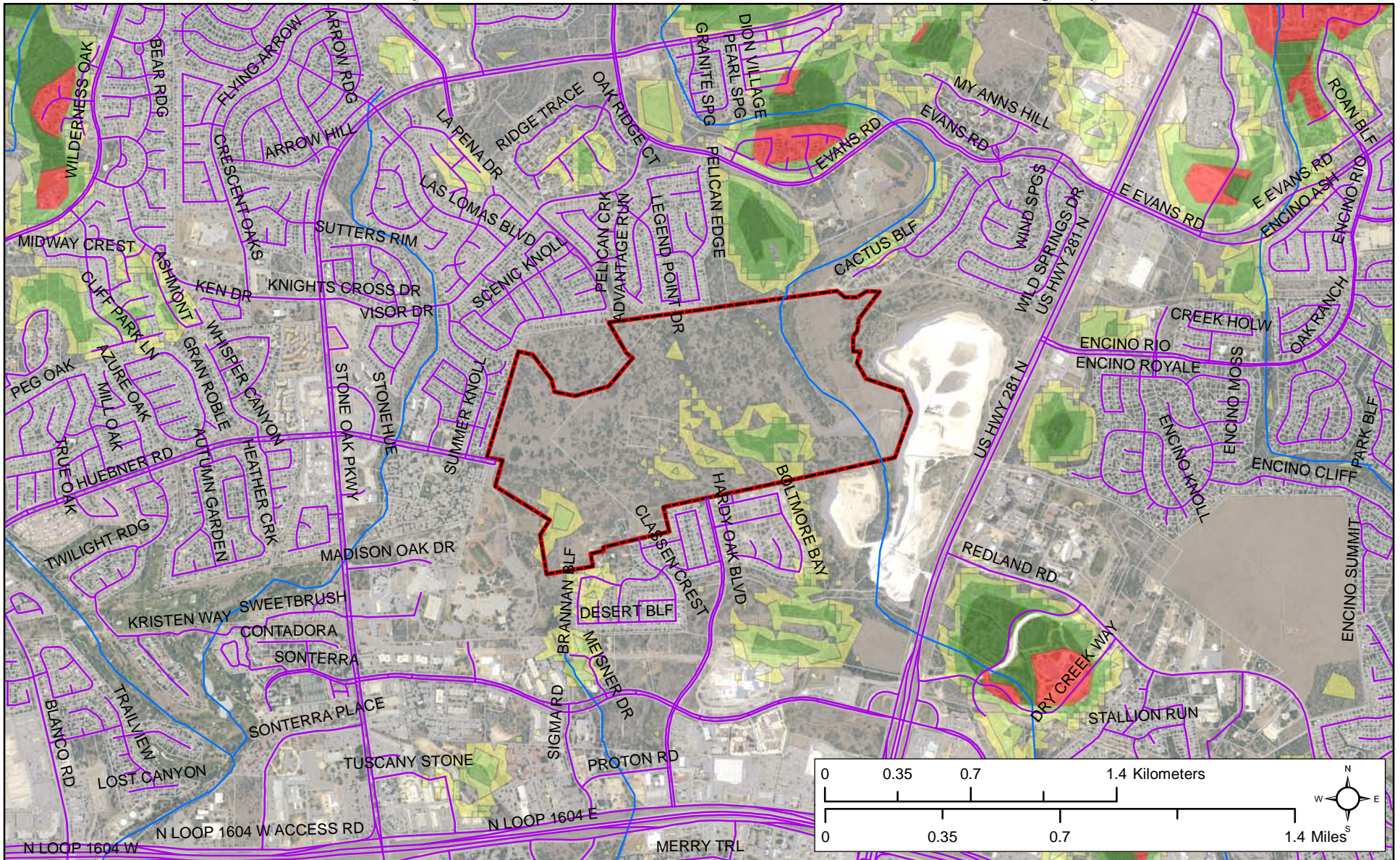


Steubing Ranch with Golden-Cheeked Warbler Habitat

Base Layer: 2008 NAIP True Color Satellite Imagery



Legend

- Roads and Highways
- Rivers and Streams
- Appraisal District parcel boundaries
- Rank 4 Habitat Lost Between 2001 and 2008

Golden-cheeked Warbler Habitat as of 2001:

- Rank 1: 20 - 40% forest cover. Potential low quality habitat when bordering higher ranked habitat; not habitat when not bordering higher ranked habitat
 - Rank 2: 40 - 60% forest cover. Potential low quality habitat when bordering higher ranked habitat; probably not habitat when not bordering higher ranked habitat
 - Rank 3: 60 - 80% forest cover. Potential moderate quality habitat when bordering habitat ranked Rank 4: potential low quality habitat when not bordering habitat ranked 4
 - Rank 4: 80 - 100% forest cover. Potential moderate to high quality habitat
- Model C data compiled from: Diamond, D.D. 2007. Project Final Report: Range-wide modeling of golden-cheeked warbler habitat. 12/15/07 report to TPWD, unpublished document.