

CAMP BULLIS ENCROACHMENT



***Camp Bullis Army Environmental
Concerns ref USAs Near Cibolo Bluffs
Nature Preserve***

Feb 22, 2013

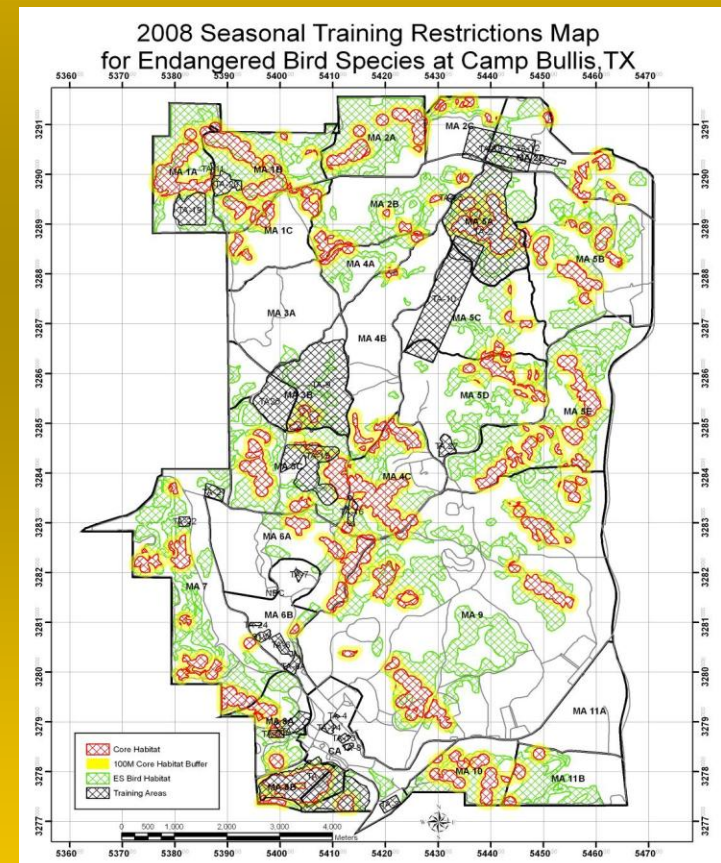
***Mr Jim Cannizzo, Environmental
Attorney Advisor, Camp Stanley, and
Retained Army Functions at Fort Sam
Houston and Camp Bullis***

Camp Bullis Endangered Species Issues



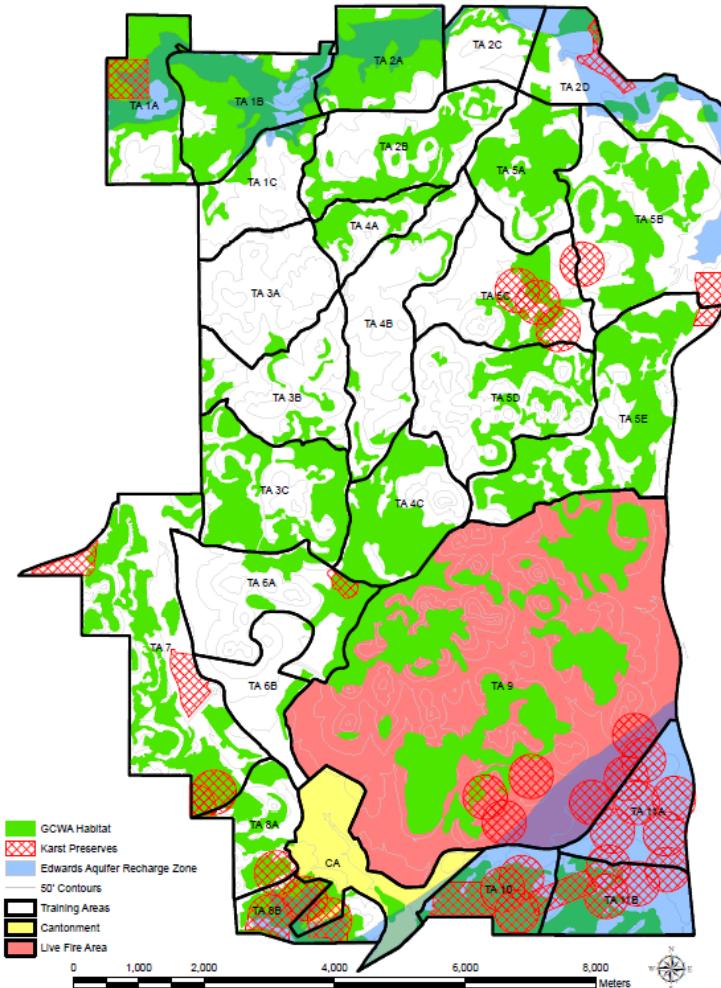
CHANGE DUE TO 3 YEARS OF Golden-cheeked Warbler (GCWA) MITIGATION on BULLIS: – 2,400 acres of habitat

- 2008 surveys, 10,020 acres total of Camp Bullis was GCWA habitat;
 - 3,120 acres were occupied habitat
 - 6,900 acres unoccupied (potential habitat)
- 2012 7,517 acres total GCWA habitat (due to mitigation of 2,400 acres over 3 clearing seasons, 2009/2010, 2010/2011 2011/12); also 100 acres were deleted due to reevaluation with FWS
 - 4,991 acres are occupied habitat
 - 2,526 acres are unoccupied habitat

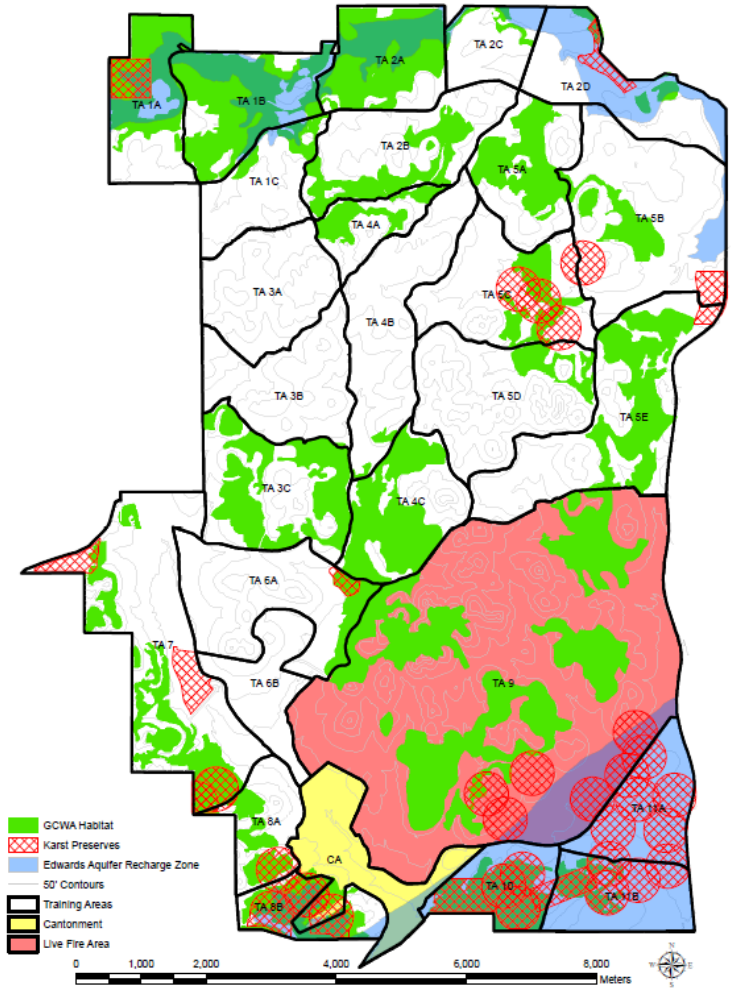


Comparison 2009 vs 2012

Pre-GCWA Habitat Mitigation (2009) - Camp Bullis, TX



Current GCWA Habitat Inventory (2012) - Camp Bullis, TX



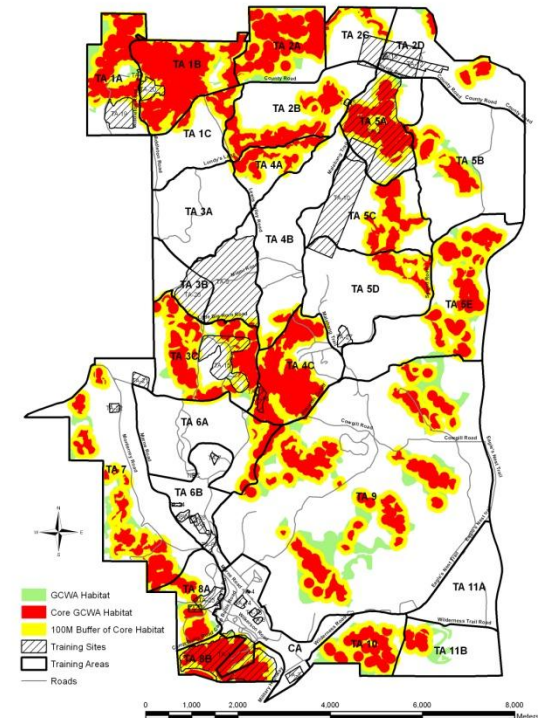
Camp Bullis Endangered Species Issues

Effect of large-scale habitat clearing around Camp Bullis

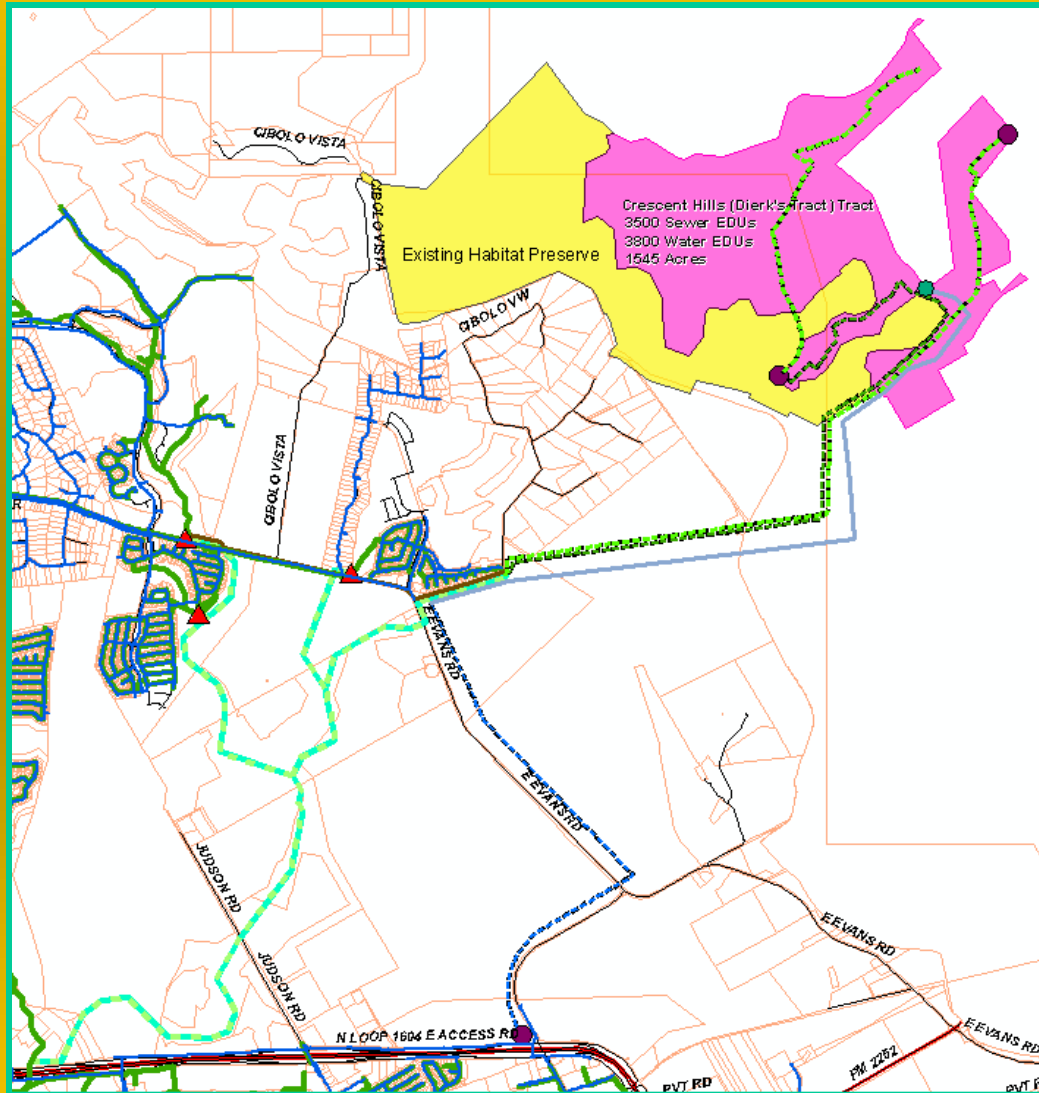
- RAPIDLY INCREASING POPULATION of Golden-cheeked Warbler on the Camp; 2012 highest density & largest area of occupied habitat
- 2008 - 2012 survey results: +1,871 acres occupied habitat (4,991 occupied acres in 2012 vs 3,120 acres in 2008)
- 7,517 acres potential habitat 2012
- 9,836 acres of seasonal restrictions (occupied + 100 meter buffer around it)



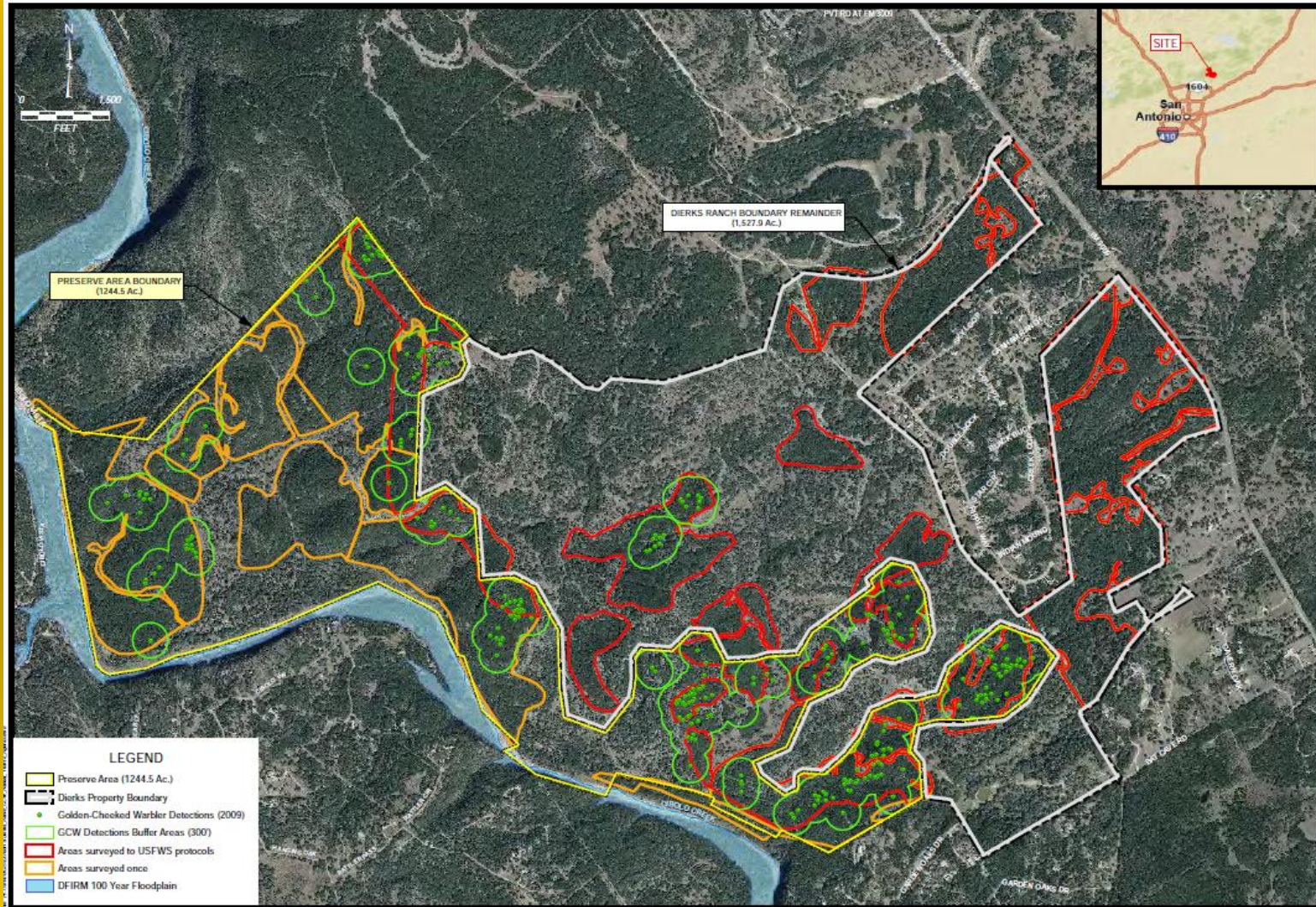
2013 Seasonal Golden-cheeked Warbler (01 Mar-15 Aug)
Training Restriction Map- Camp Bullis, TX



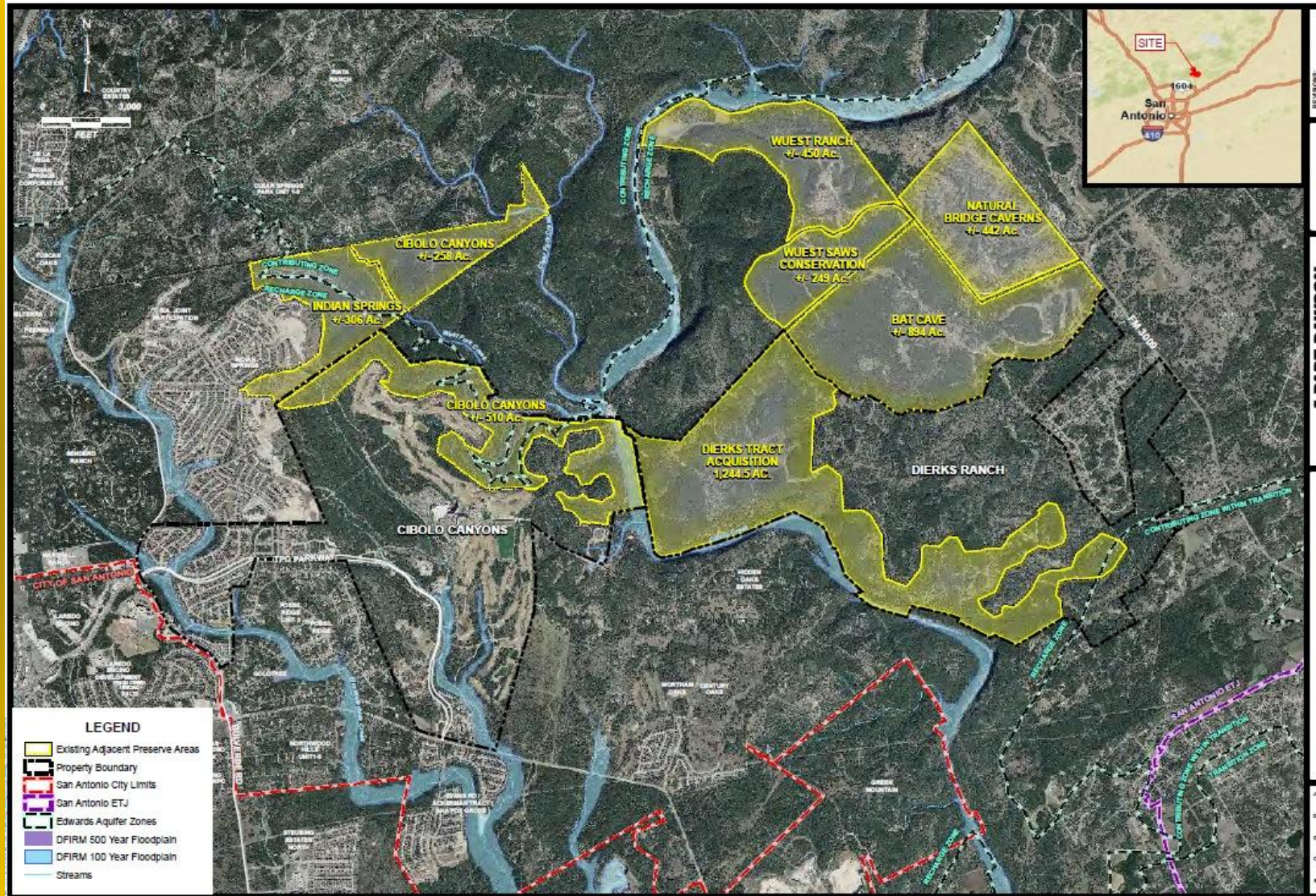
Crescent Hills USA Map



GCWA Survey for this Area (2009)



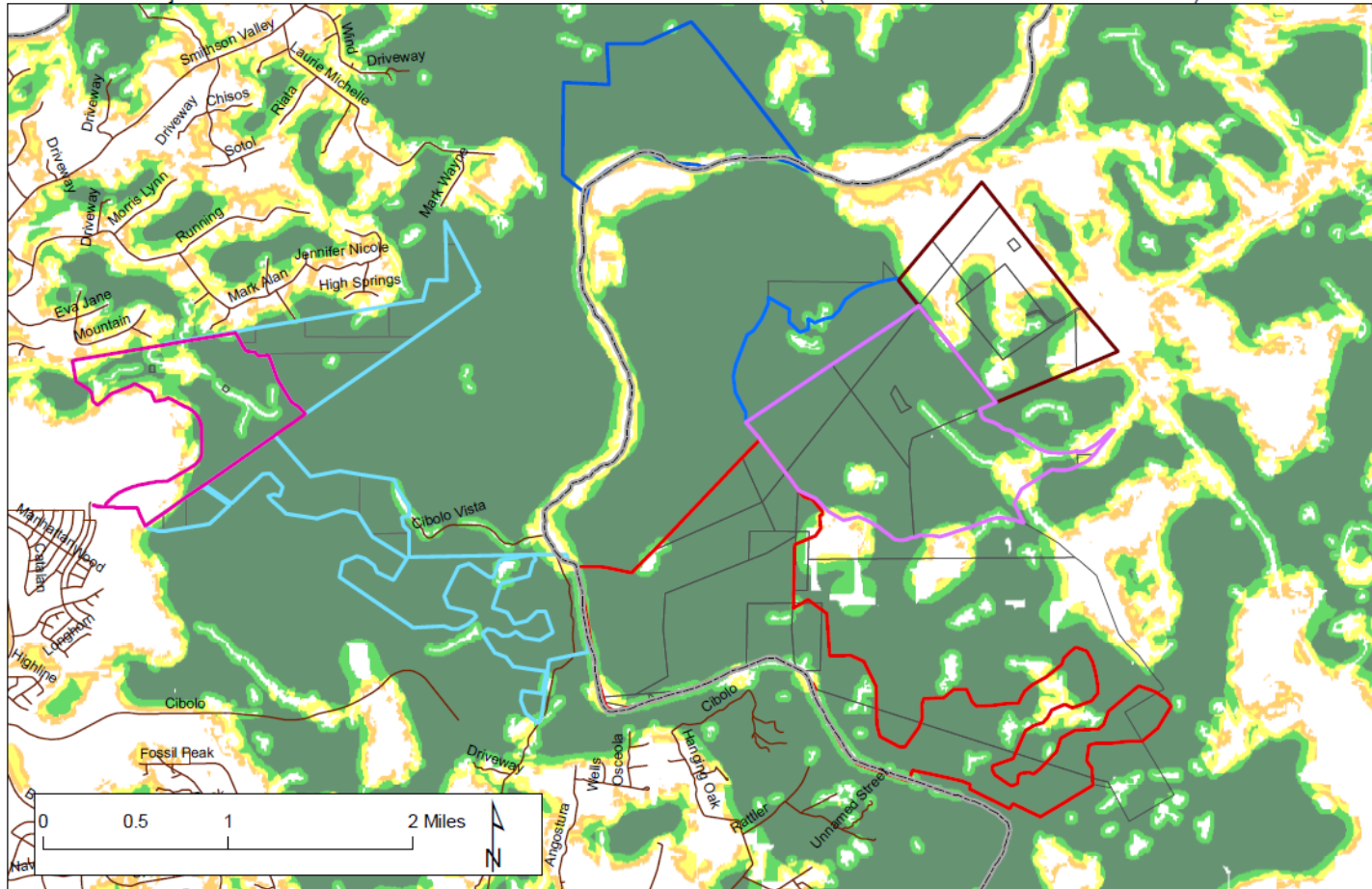
Conservation Tracts in the Crescent Hills USA Area



***Bracken Bat Cave home to 20 million bats, largest colony in world**

GCWA Model for the Crescent Hills Area

Dierks Tract Adjacent Preserve Parcels with Golden-cheeked Warbler Habitat (Diamond 2005-07 rerun of Model C)



- Dierks Tract Acquisition
- Indian Springs: selected HCP parcels
- Wuest SAWS Conservation Easement
- Cibolo Canyons: selected HCP parcels
- Bexar County Boundary
- Streets
- BCI

- Golden-cheeked Warbler Habitat*
- Rank 1 - Low Quality: 20 - 40% forest cover.
 - Rank 2 - 40 - 60% forest cover.
 - Rank 3 - 60 - 80% forest cover.
 - Rank 4 - Habitat remaining as of 2009

Rerun of Diamond Model C with 2005-07 data. Model C originally run with 2001 data for: Diamond, D.D. 2007. Project Final Report: Range-wide modeling of golden-cheeked warbler habitat. 12/15/07 report to TPWD, unpublished document.

Conclusion/Questions

Pressure on Camp Bullis & Hill Country

