

# San Antonio-Austin Regional Geography

Bill Barker, AICP

May 16, 2017

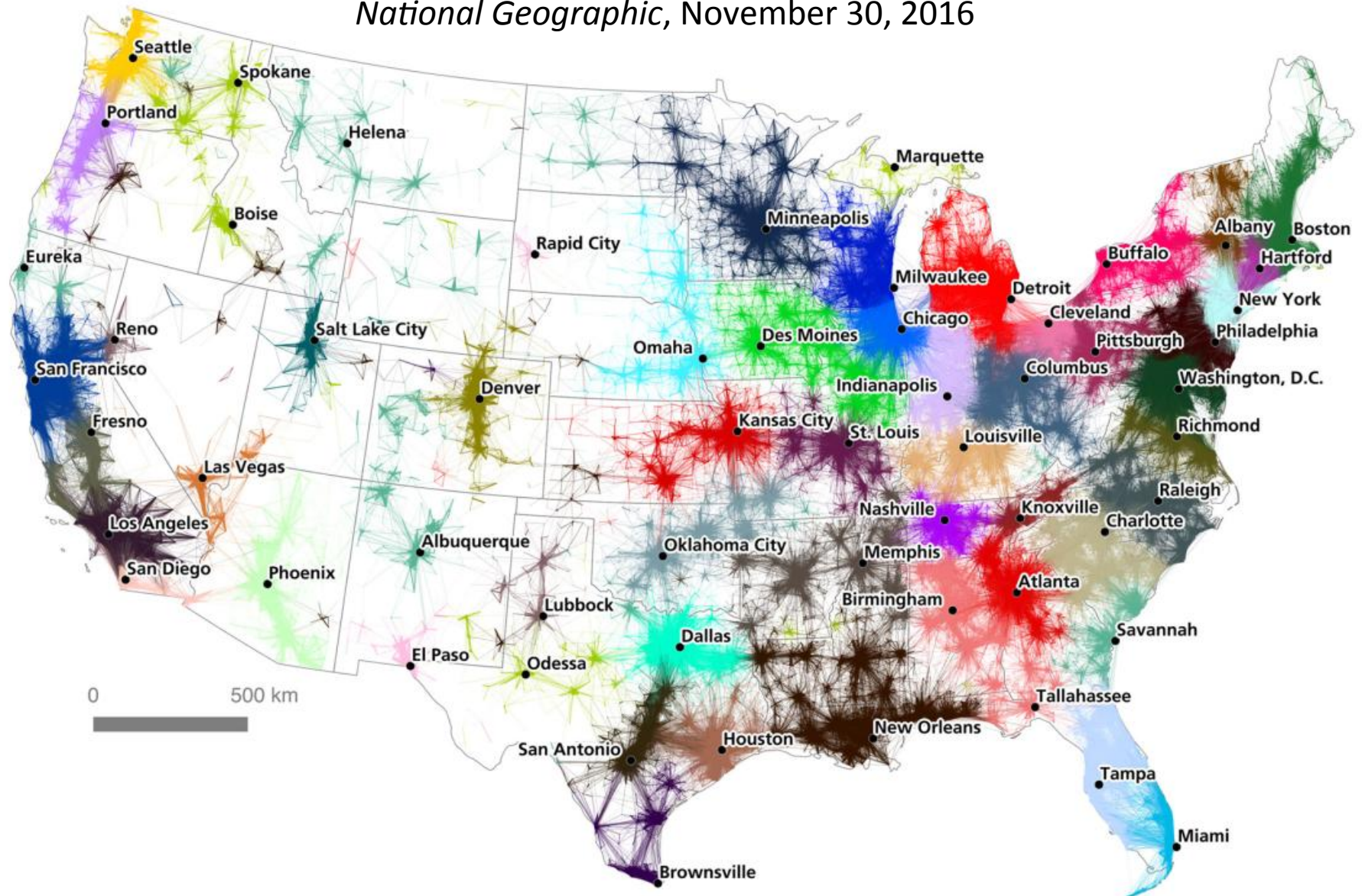
# Composite image of continental U.S. at night, 2016



Credits: NASA Earth Observatory  
images by Joshua Stevens, using Suomi  
NPP VIIRS data from Miguel Román,  
NASA's Goddard Space Flight Center

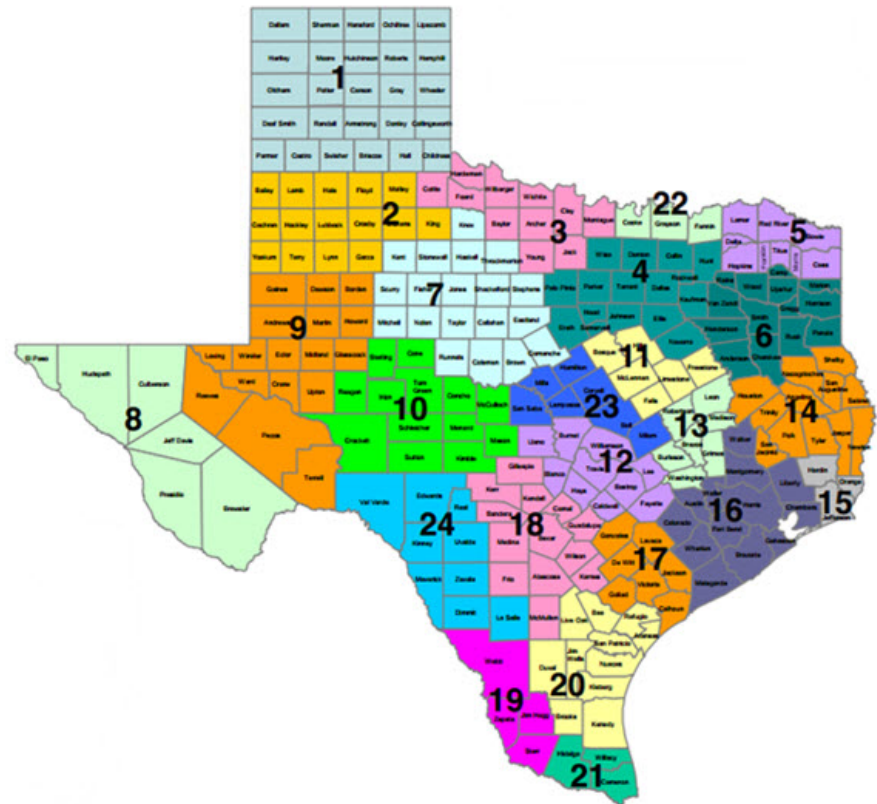
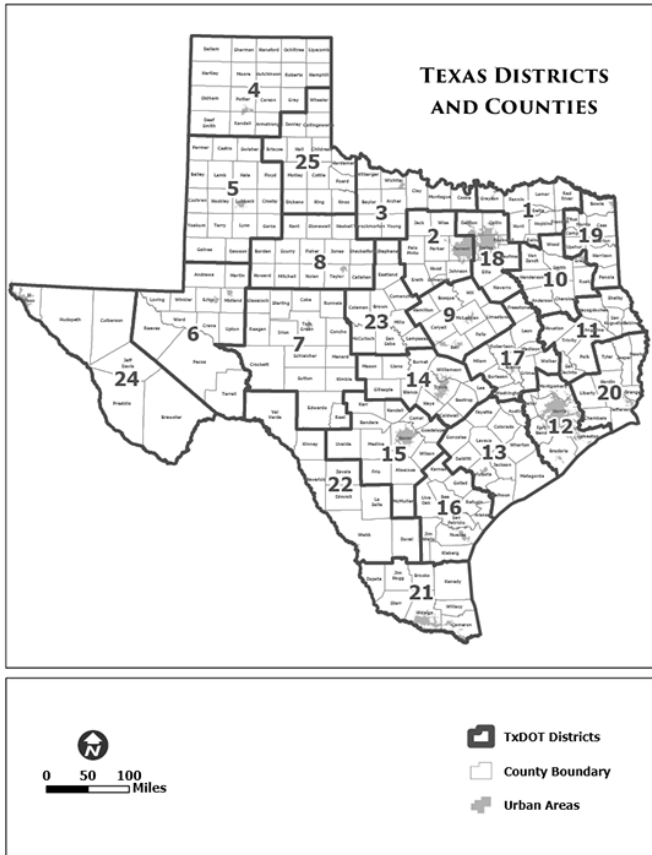
# Four Million Commutes Reveal New U.S. 'Megaregions'

*National Geographic, November 30, 2016*



<http://news.nationalgeographic.com/2016/11/us-commutes-reveal-new-economic-megaregions-map/#/01megaregions.jpg>

# TxDOT Districts & Regional Councils

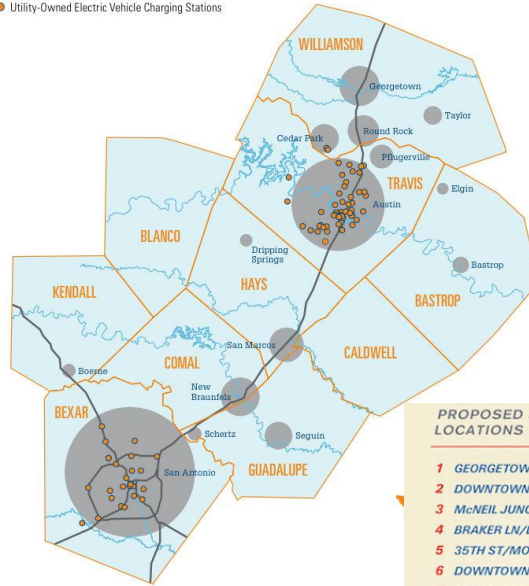


# Selected "Corridor" Efforts



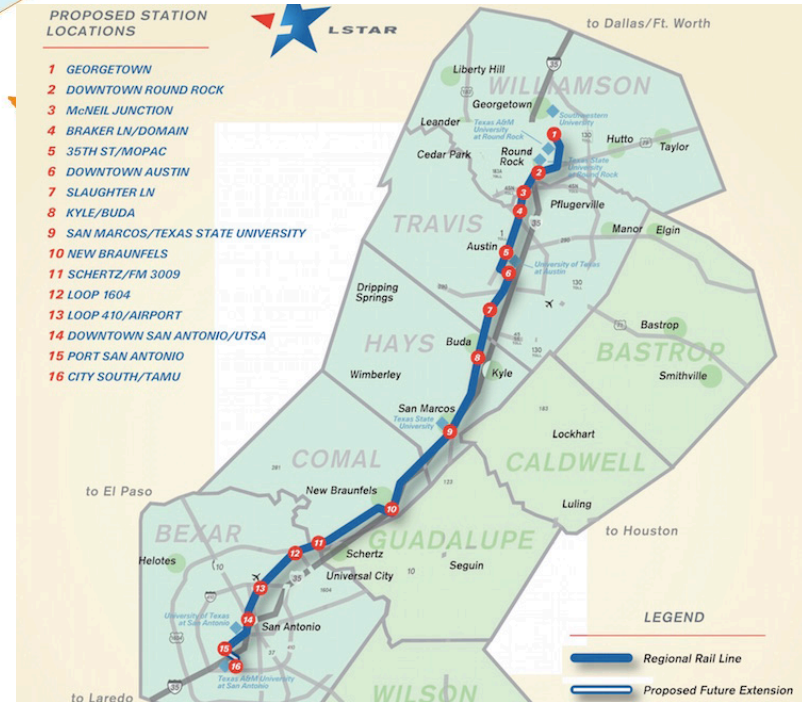
- Please click on a county or choose a city for more information.
- Bastrop County**
    - Bastrop
    - Elgin
    - Smithville
  - Caldwell County**
    - Lockhart
    - Luling
    - Marlin
    - Mustang Ridge
    - Niederwald
    - Uhlrad
  - Comal County**
    - Bulverde
    - Garden Ridge
    - New Braunfels
  - Guadalupe County**
    - Marion
    - New Berlin
    - Santa Clara
    - Seguin
    - Staples
  - Travis County**
    - Austin
    - Bee Cave
    - Briarcliff
    - Cressknoor
    - Jonestown
    - Lago Vista
    - Lakeway
    - Manor
    - Pflugerville
    - Point Venture
    - Rollingwood
    - San Leanna
    - Sunset Valley
    - The Hills
    - Volente
    - Webberville
    - West Lake Hills
  - Bexar County**
    - Alamo Heights
    - Balcones Heights
    - Castle Hills
    - China Grove
    - Cibolo
    - Converse
    - Elmendorf
    - Far Cakes Ranch
    - Grey Forest
    - Helotes
    - Hill Country Village
    - Hollywood Park
    - Kitty
    - Leon Valley
    - Live Oak
    - Lufkin
    - Olmos Park
    - Saint Hedwig
    - San Antonio
    - Schertz
    - Selma
    - Shavano Park
    - Somerset
    - Terrell Hills
    - Universal City
    - Von Ormy
    - Windcrest
  - Hays County**
    - Bear Creek
    - Buda
    - Dripping Springs
    - Hays
    - Kyle
    - Mountain City
    - San Marcos
    - Wimberley
    - Woodcreek
  - Williamson County**
    - Bartlett
    - Cedar Park
    - Florence
    - Georgetown
    - Granger
    - Hutto
    - Jarrell
    - Leander
    - Liberty Hill
    - Round Rock
    - Taylor
    - Thorndale
    - Travis
    - Weir

● Utility-Owned Electric Vehicle Charging Stations



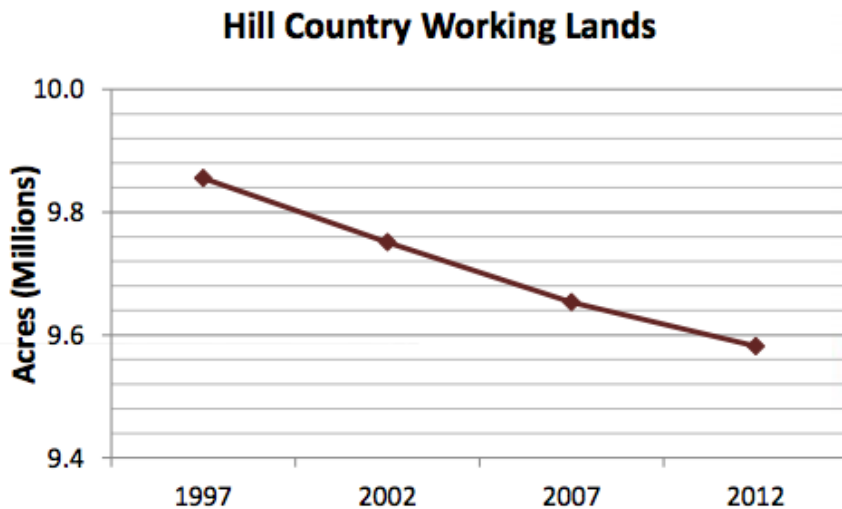
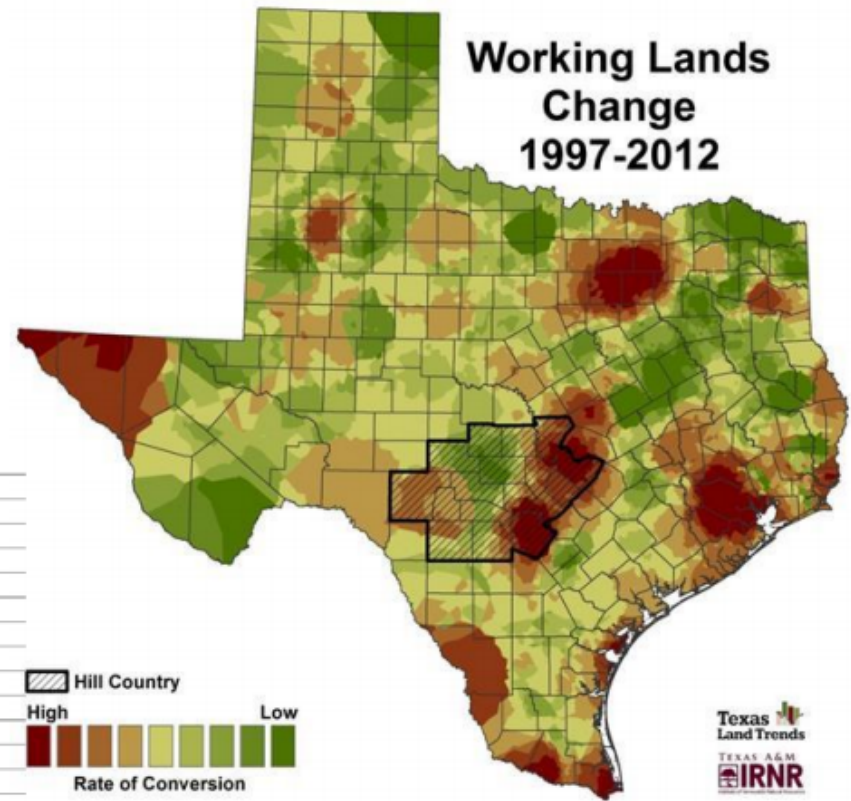
A map of the Texas River Cities program area. Dots represent utility-owned charging stations.

TEXASRIVERCITIES.COM



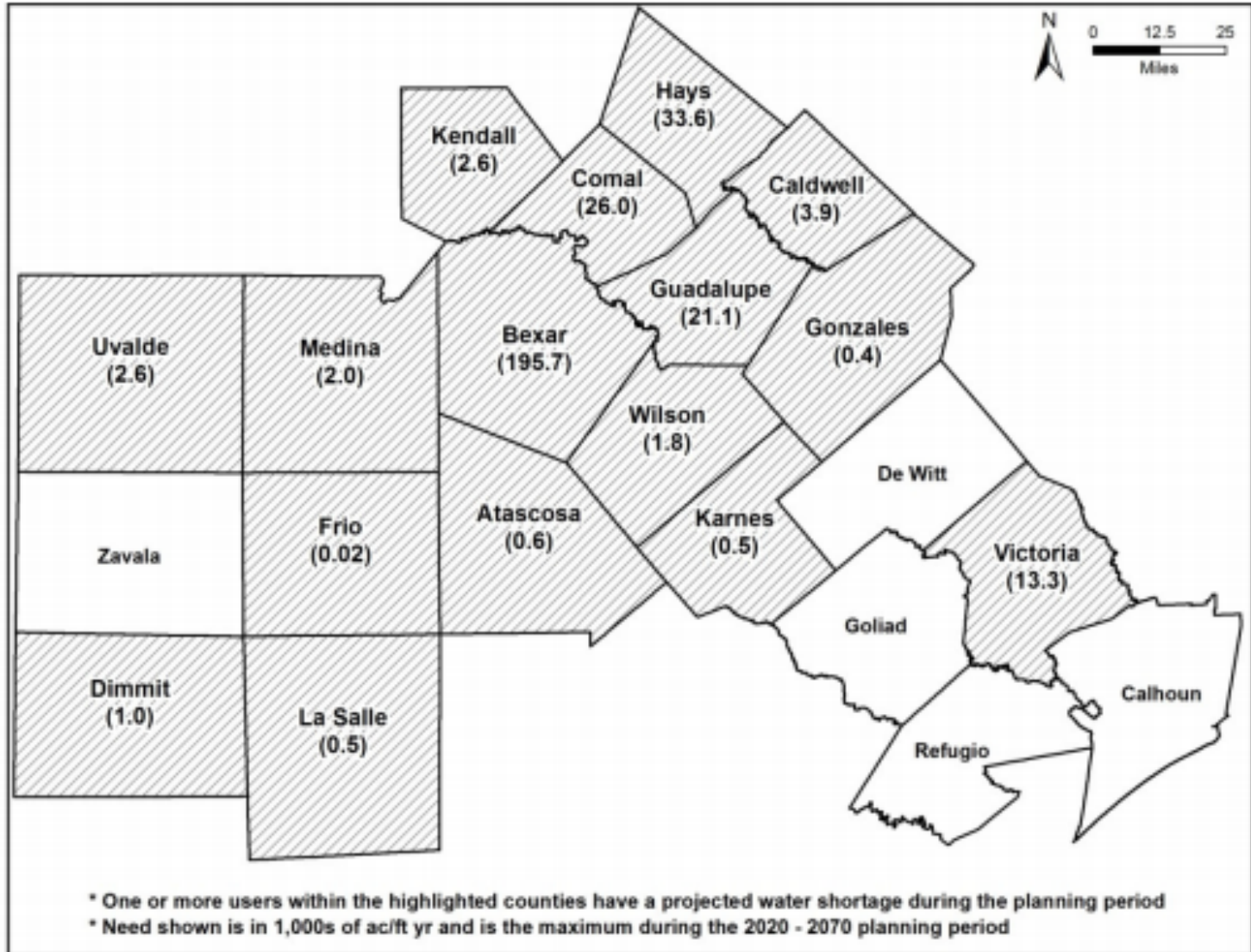
# Loss of Working Lands: Hill Country

- 1997 – 9.85 Million acres
- 2012 – 9.58 Million acres
- Loss 274K acres



# Region L

Figure 4-1 Municipal Water Needs



## Climate Change that Causes Less Precipitation in Texas Will Shift these Zones to the East

