



**hill** **country** **alliance**



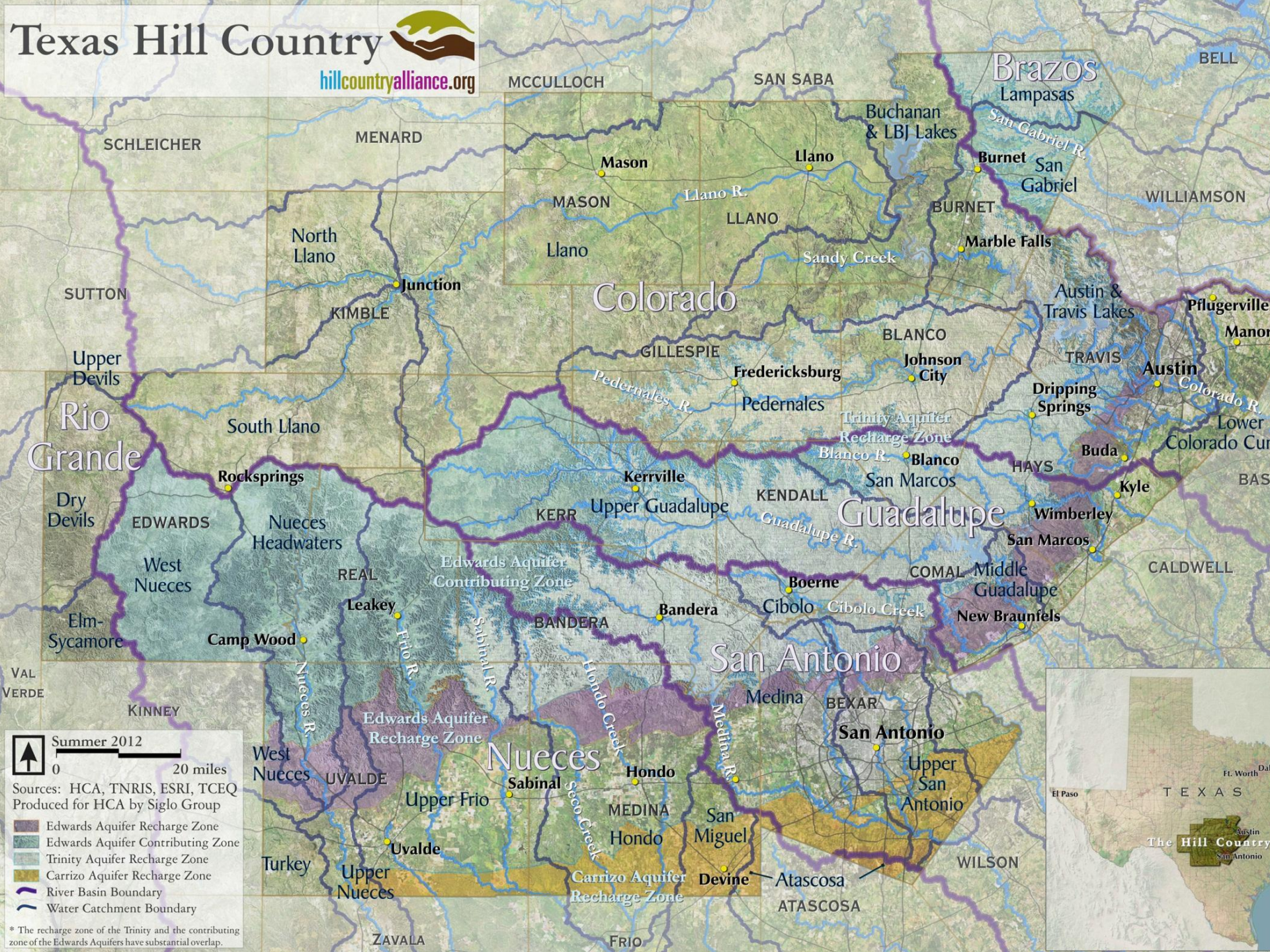






FREDERICKSBURG

Coca-Cola



**Summer 2012**

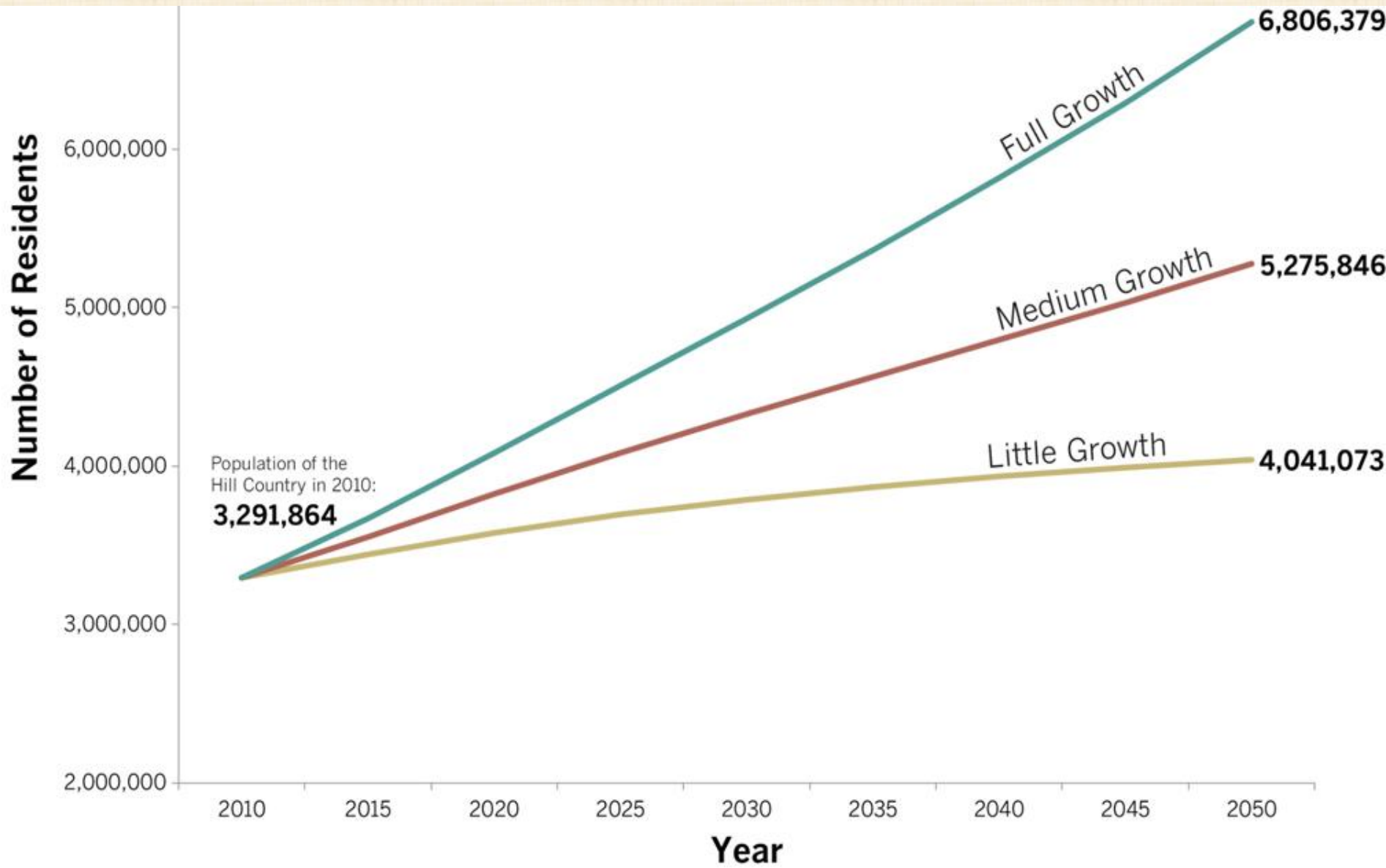
0 20 miles

Sources: HCA, TNRI, ESRI, TCEQ  
 Produced for HCA by Siglo Group

- Edwards Aquifer Recharge Zone
- Edwards Aquifer Contributing Zone
- Trinity Aquifer Recharge Zone
- Carrizo Aquifer Recharge Zone
- River Basin Boundary
- Water Catchment Boundary



\* The recharge zone of the Trinity and the contributing zone of the Edwards Aquifers have substantial overlap.

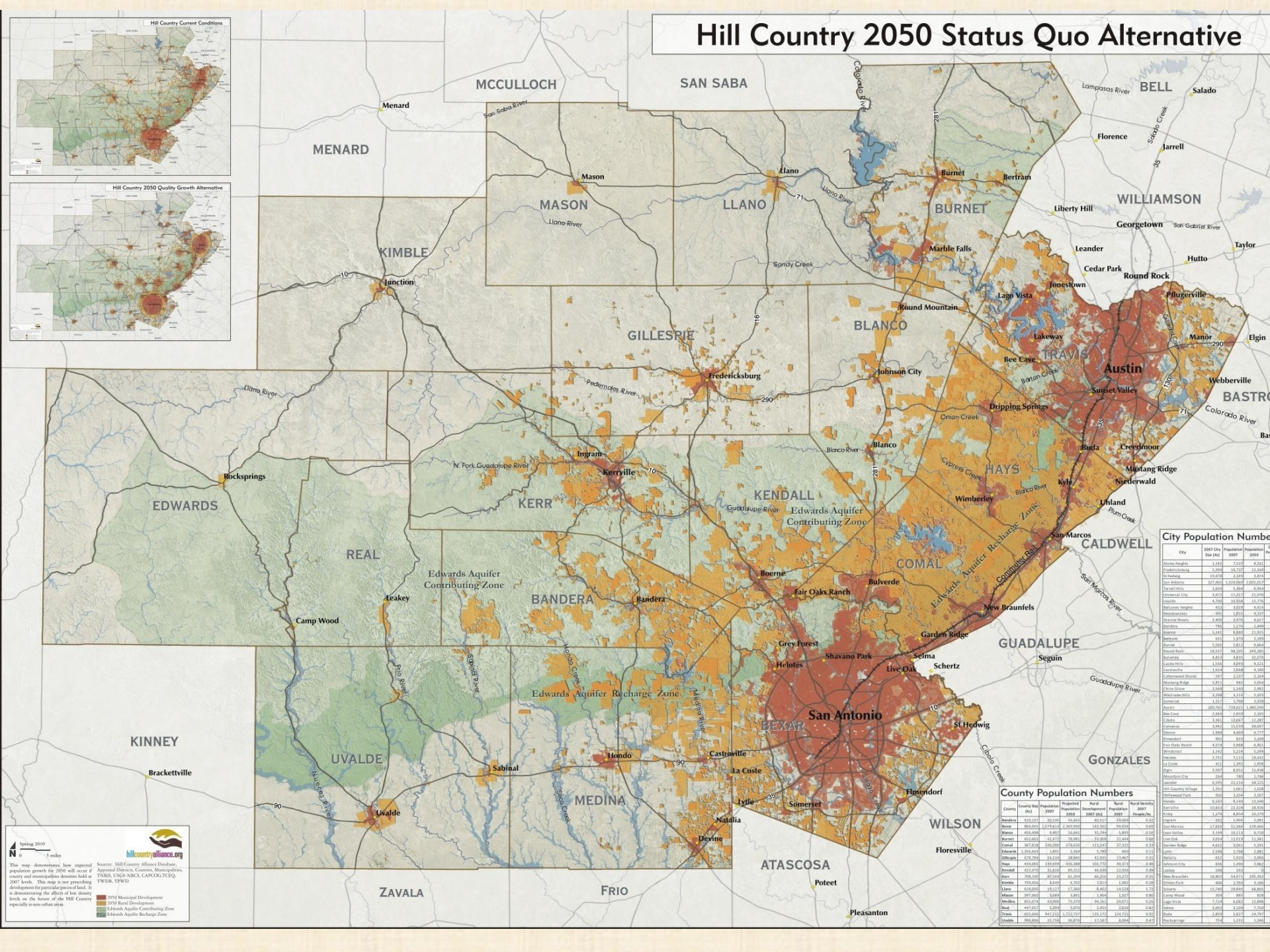
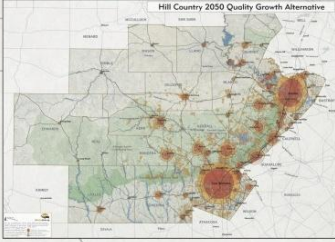
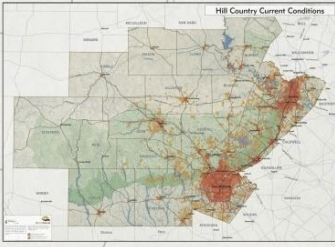


Source: Texas State Demographer, 2013  
Via Hill Country Studio, UT Community and Regional Planning 2015





# Hill Country 2050 Status Quo Alternative



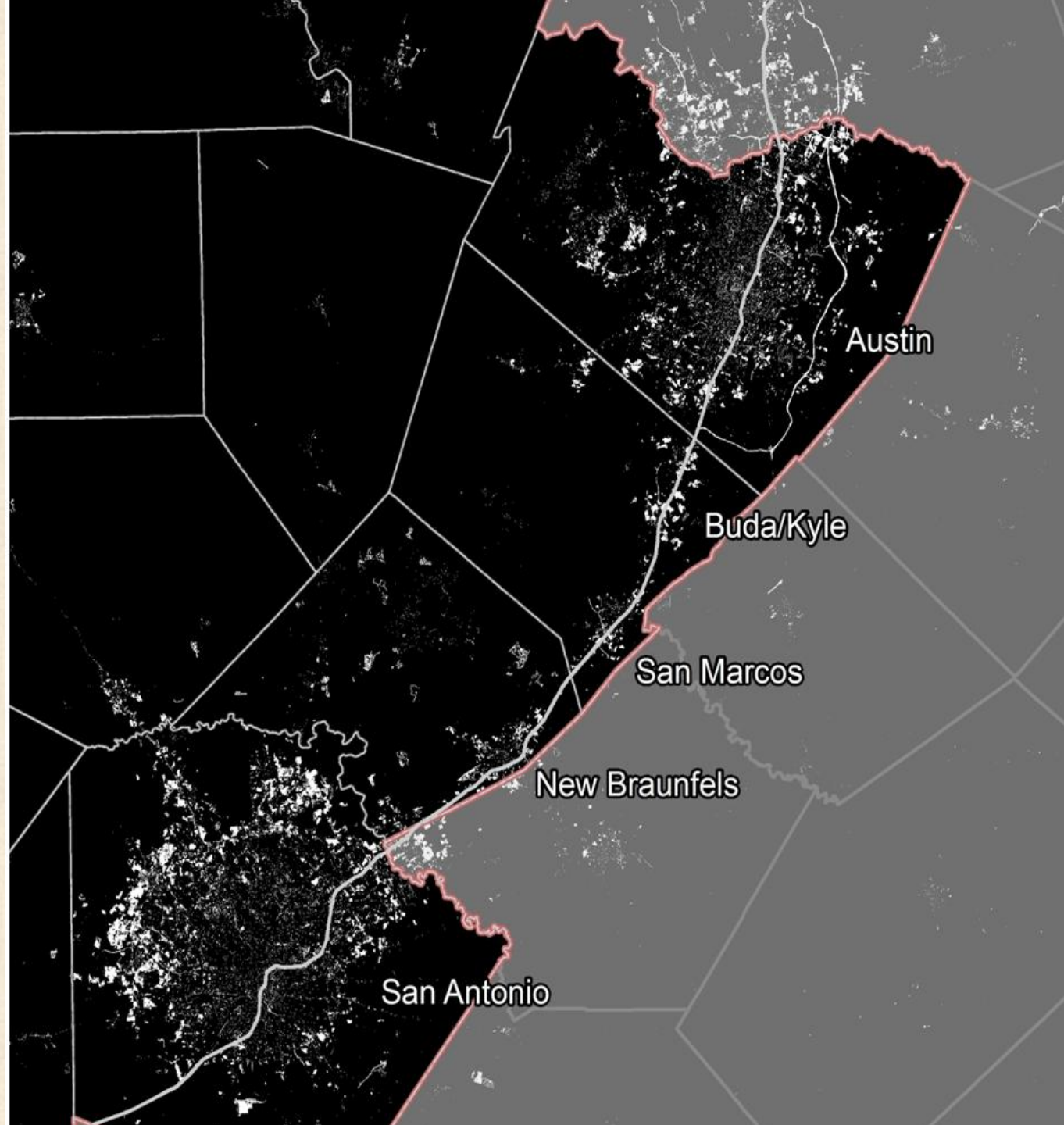
City	2007 City Size (A)	2007 Population	2050 Population	2050 DPO
Akins	1,422	7,217	8,511	0.55
Bandera	1,324	10,317	12,004	0.52
Brewer's	19,418	22,648	24,734	0.64
Caney	1,029	5,948	6,934	0.64
Carrizo Springs	10,000	10,000	10,000	0.60
Comstock	4,072	17,217	23,207	0.64
Conroe	4,200	39,304	45,276	0.64
Edwards	412	2,070	4,414	0.64
Elgin	5,285	2,214	2,314	0.64
Floresville	2,400	2,476	4,427	0.64
Georgetown	2,960	13,776	14,200	0.64
Hutto	5,514	8,860	12,514	0.64
Jarrell	411	1,870	2,309	0.64
Leander	5,505	5,213	3,864	0.64
Marble Falls	18,517	18,245	24,285	0.64
McCombs	4,811	4,811	12,270	0.64
Meridianville	1,514	4,914	4,214	0.64
Mission Hills	1,814	2,814	4,300	0.64
Northside	1,814	1,814	2,314	0.64
Phyllis	1,814	1,814	2,314	0.64
Richardson	1,814	1,814	2,314	0.64
Round Rock	2,014	2,014	4,200	0.64
Schertz	1,814	1,814	2,314	0.64
St. Charles	1,814	1,814	2,314	0.64
St. Louis	1,814	1,814	2,314	0.64
St. Peter	1,814	1,814	2,314	0.64
St. Rose	1,814	1,814	2,314	0.64
St. Vincent	1,814	1,814	2,314	0.64
Texas	1,814	1,814	2,314	0.64
Victoria	1,814	1,814	2,314	0.64
Walden	1,814	1,814	2,314	0.64
Waterloo	1,814	1,814	2,314	0.64
Wesley	1,814	1,814	2,314	0.64
Willsiepe	1,814	1,814	2,314	0.64

County	County Size (A)	Population 2007	Population 2050	2050 Growth	2050 Growth %
Bandera	514,191	10,714	11,814	1,100	0.10
Brewer's	214,214	12,472	13,814	1,342	0.11
Burnet	412,214	12,472	13,814	1,342	0.11
Comal	1,142,214	13,814	15,214	1,400	0.10
Duval	1,142,214	13,814	15,214	1,400	0.10
Edwards	1,142,214	13,814	15,214	1,400	0.10
Hill	1,142,214	13,814	15,214	1,400	0.10
Kerr	1,142,214	13,814	15,214	1,400	0.10
Mason	1,142,214	13,814	15,214	1,400	0.10
Mohave	1,142,214	13,814	15,214	1,400	0.10
Real	1,142,214	13,814	15,214	1,400	0.10
San Antonio	1,142,214	13,814	15,214	1,400	0.10
Wilson	1,142,214	13,814	15,214	1,400	0.10

Spring 2010  
  
 Sources: Hill Country Alliance Database, Appraisal Districts, Counties, Municipalities, FIPS, GIS, NARA, CAPCO, TEXA, TWID, TPWD.  
 This map is not representing development for particular pieces of land. It is demonstrating the effects of low density growth on the future of the Hill Country especially in non-urban areas.

■ 2050 Municipal Development  
■ 2050 Rural Development  
■ Edwards Aquifer Contributing Zone  
■ Edwards Aquifer Recharge Zone

# Change in impervious cover 2000-2010.



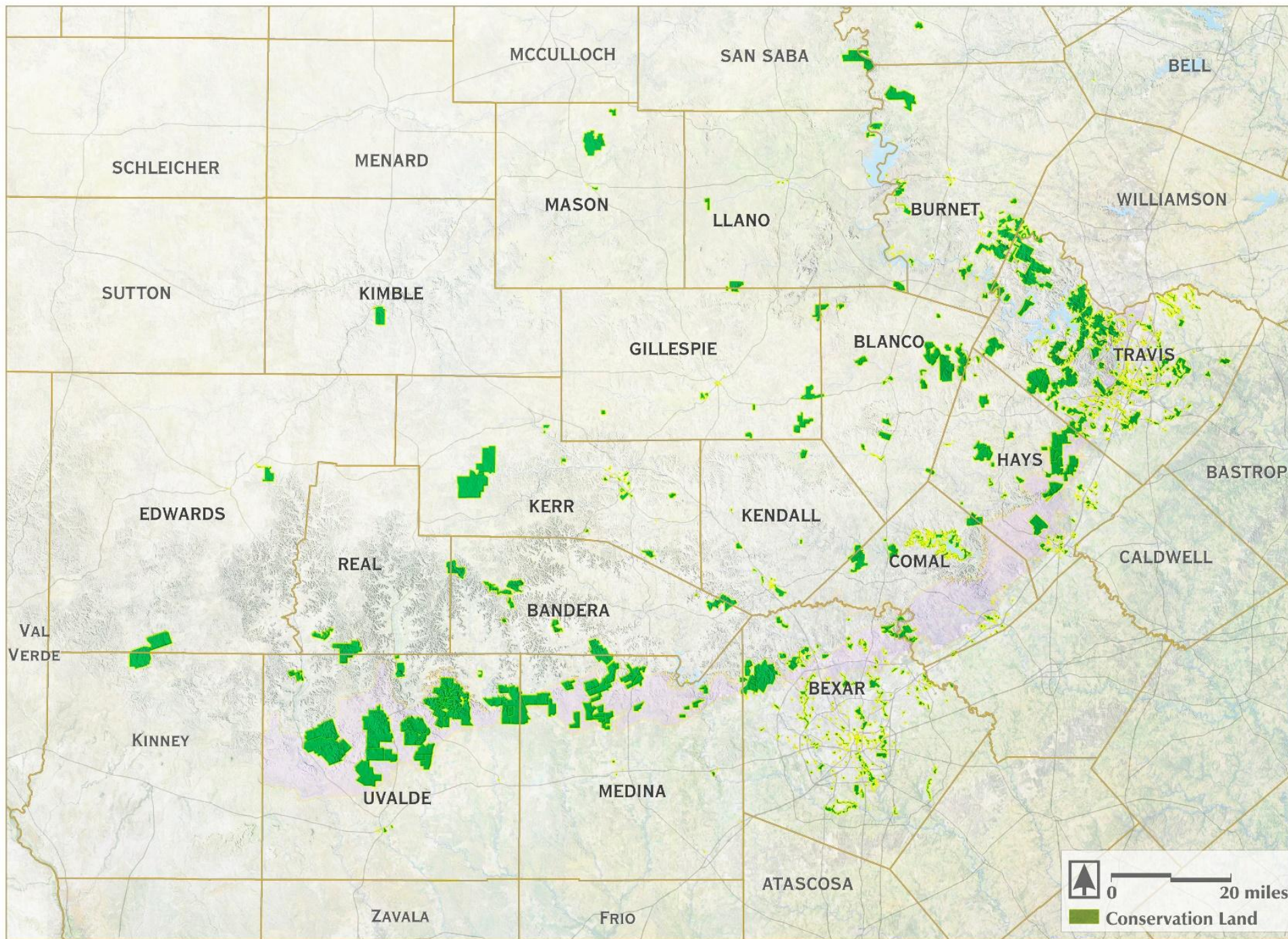
Source: Multi-Resolution Land Characteristics Consortium. "National Land Cover Database." U.S. Geological Survey. 2011.

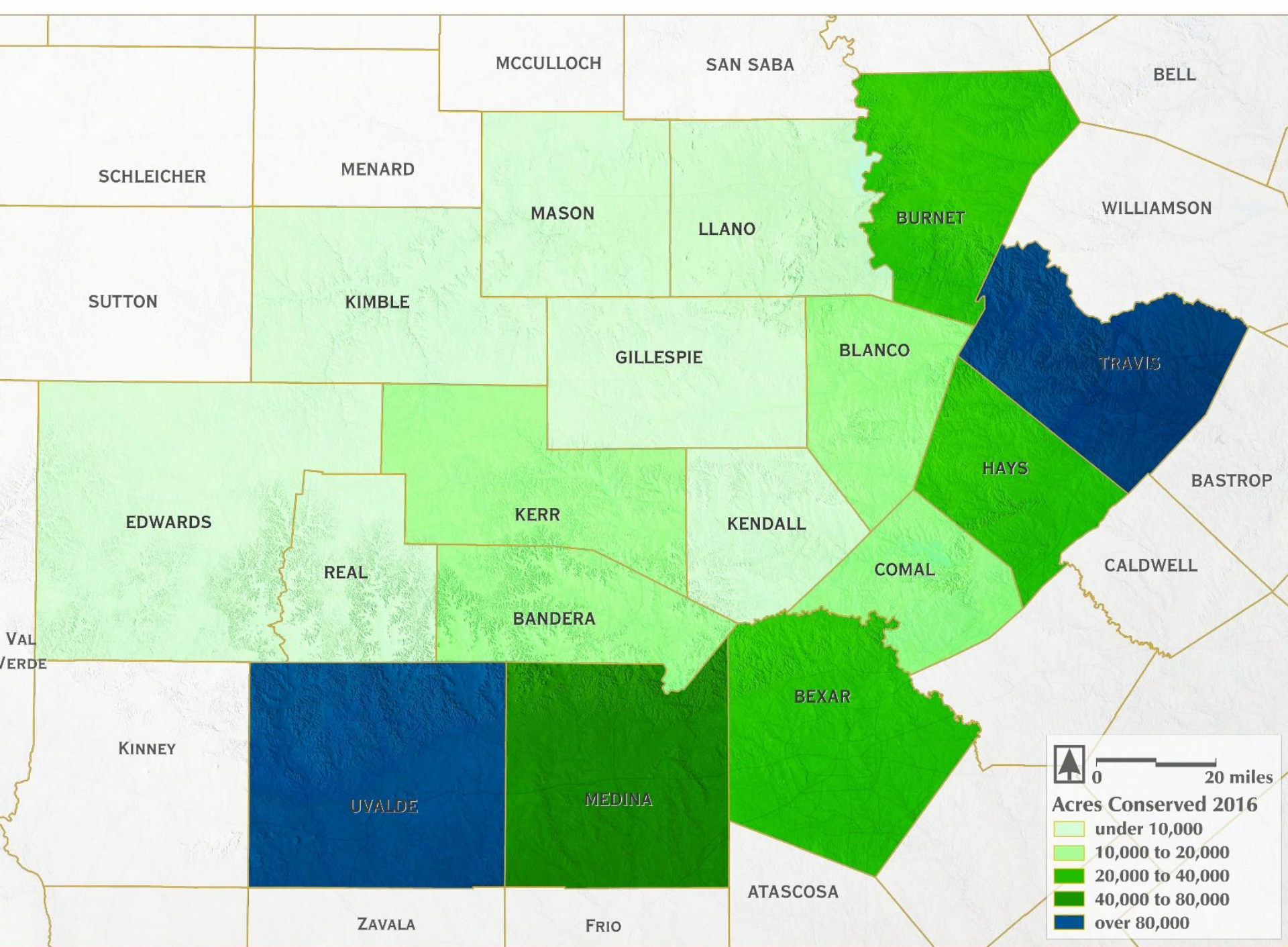














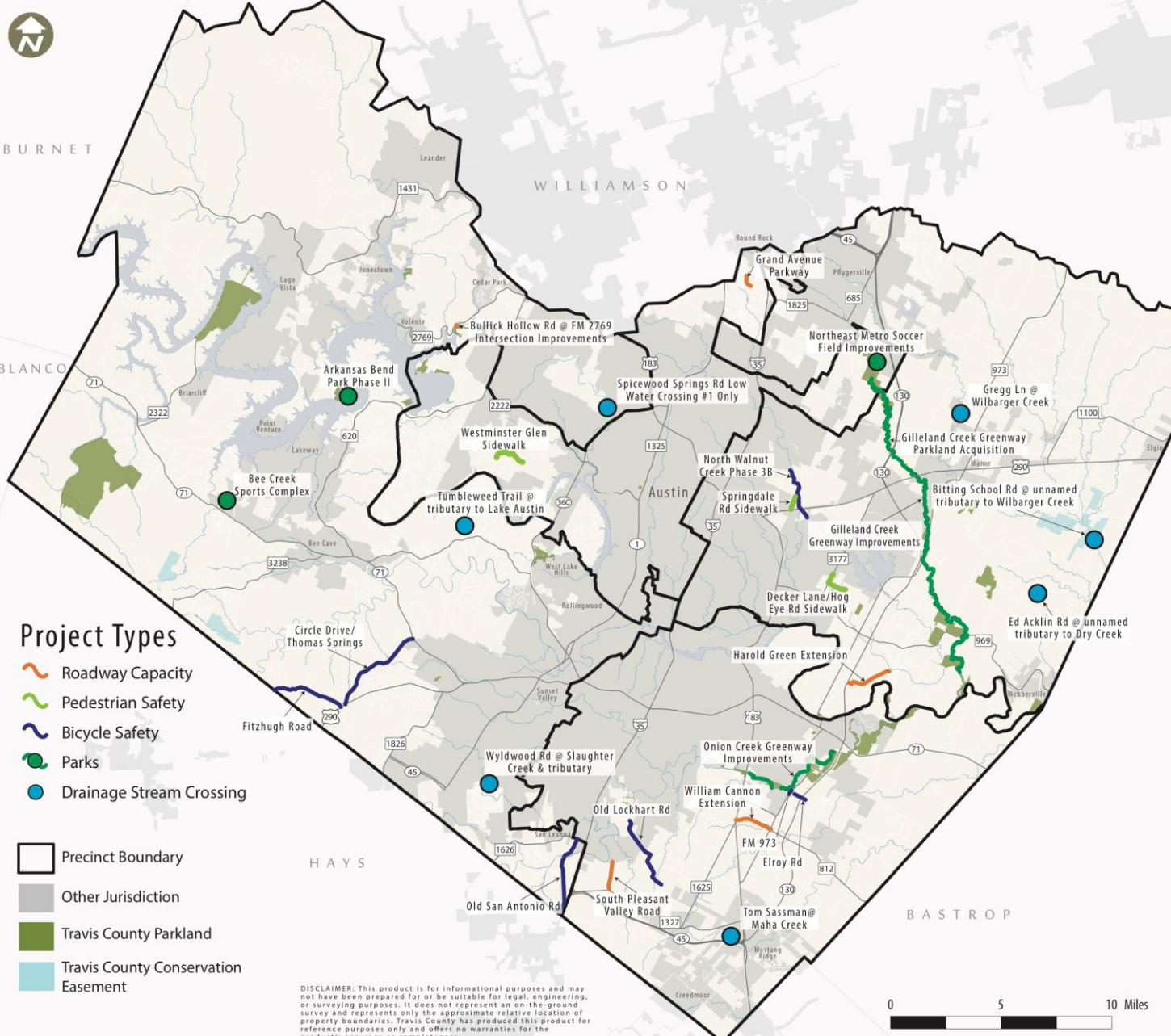


# Keys to Conservation Success:

- Strong conservation leadership
  - Committed landowner partners
  - Local demand for conservation
  - Resources to leverage funding opportunities`
- 
- A photograph of an outdoor community meeting or presentation. In the foreground, several people are seated at white folding tables, facing away from the camera. In the middle ground, a person stands at a podium with a microphone, addressing the group. The background shows more people seated at tables, some under a canopy, and a large tree on the left. The scene is set outdoors on a grassy area with trees and buildings in the distance.

# Proposed Capital Projects as of August 8, 2017

**Proposed  
2017 November  
Bond Election  
\$184,940,000**



## Project Types

- Roadway Capacity
- Pedestrian Safety
- Bicycle Safety
- Parks
- Drainage Stream Crossing

- Precinct Boundary
- Other Jurisdiction
- Travis County Parkland
- Travis County Conservation Easement

DISCLAIMER: This product is for informational purposes and may not have been prepared for or be suitable for legal, engineering, or surveying purposes. It does not represent an on-the-ground survey and represents only the approximate relative location of property boundaries. Travis County has produced this product for reference purposes only and offers no warranties for the product's accuracy or completeness.

PROPOSITION A	
<b>Roadway Capacity</b>	<b>\$31,719,050</b>
Bullick Hollow Rd @ FM 2769 Intersection Improvements	\$1,222,100
Grand Avenue Parkway	\$4,888,400
Harold Green Extension	\$11,887,700
William Cannon Extension	\$3,333,000
South Pleasant Valley Road	\$9,554,600
TxDOT Right-of-Way*	\$833,250
<b>Pedestrian Safety</b>	<b>\$8,173,438</b>
Decker Lane/Hog Eye Rd Sidewalk	\$2,110,900
Springdale Rd Sidewalk	\$1,696,497
Sidewalk Safety & ADA Upgrades*	\$2,444,200
Westminster Glen Sidewalk	\$1,921,841
<b>Bicycle Safety</b>	<b>\$26,664,000</b>
Circle Drive / Thomas Springs	\$6,721,550
Fitzhugh Road	\$6,332,700
Old San Antonio Road	\$6,888,200
Old Lockhart Road	\$5,666,100
Elroy Road	\$222,200
FM 973	\$166,650
North Walnut Creek Phase 3B	\$666,600
<b>Drainage Stream Crossings</b>	<b>\$26,883,644</b>
Spicewood Springs Rd Low Water Crossing #1 Only	\$3,826,617
Great Divide @ Little Barton Creek (Construction Only)	\$4,258,685
Gregg Ln @ Wilbarger Creek	\$5,000,611
Ed Acklin Rd @ unnamed tributary to Dry Creek	\$318,635
Tumbleweed Tr @ tributary to Lake Austin	\$491,062
Wylwood Rd @ Slaughter Creek & tributary	\$5,320,579
Tom Sassman Rd @ Maha Creek	\$4,839,516
Bitting School Rd @ unnamed tributary to Wilbarger Creek	\$2,827,939
<b>TOTAL</b>	<b>\$93,445,000</b>

PROPOSITION B	
<b>Parks</b>	<b>\$74,825,850</b>
Gilleland Creek Greenway Parkland Acquisition	\$2,222,000
Strategic Parkland Acquisitions*	\$11,110,000
Bee Creek Sports Complex	\$23,553,200
Onion Creek Greenway Improvements	\$10,554,500
Gilleland Creek Greenway Improvements	\$4,888,400
Eastern Travis County Parkland Acquisitions*	\$8,332,500
Arkansas Bend Park Phase II	\$5,832,750
Northeast Metro Park Soccer Field Improvements	\$8,332,500
<b>Conservation Easements</b>	<b>\$16,665,000</b>
Conservation Easements*	\$16,665,000
<b>TOTAL</b>	<b>\$91,495,000</b>

\*Project not mapped

# Travis County Voters Approve \$185 Million Bond Package

By SYEDA HASAN • 13 HOURS AGO



Tweet



Share



Google+



Email



*The bond package will pay for capital improvement efforts in Travis County, including new bike lanes and sidewalks, as well as green space.*



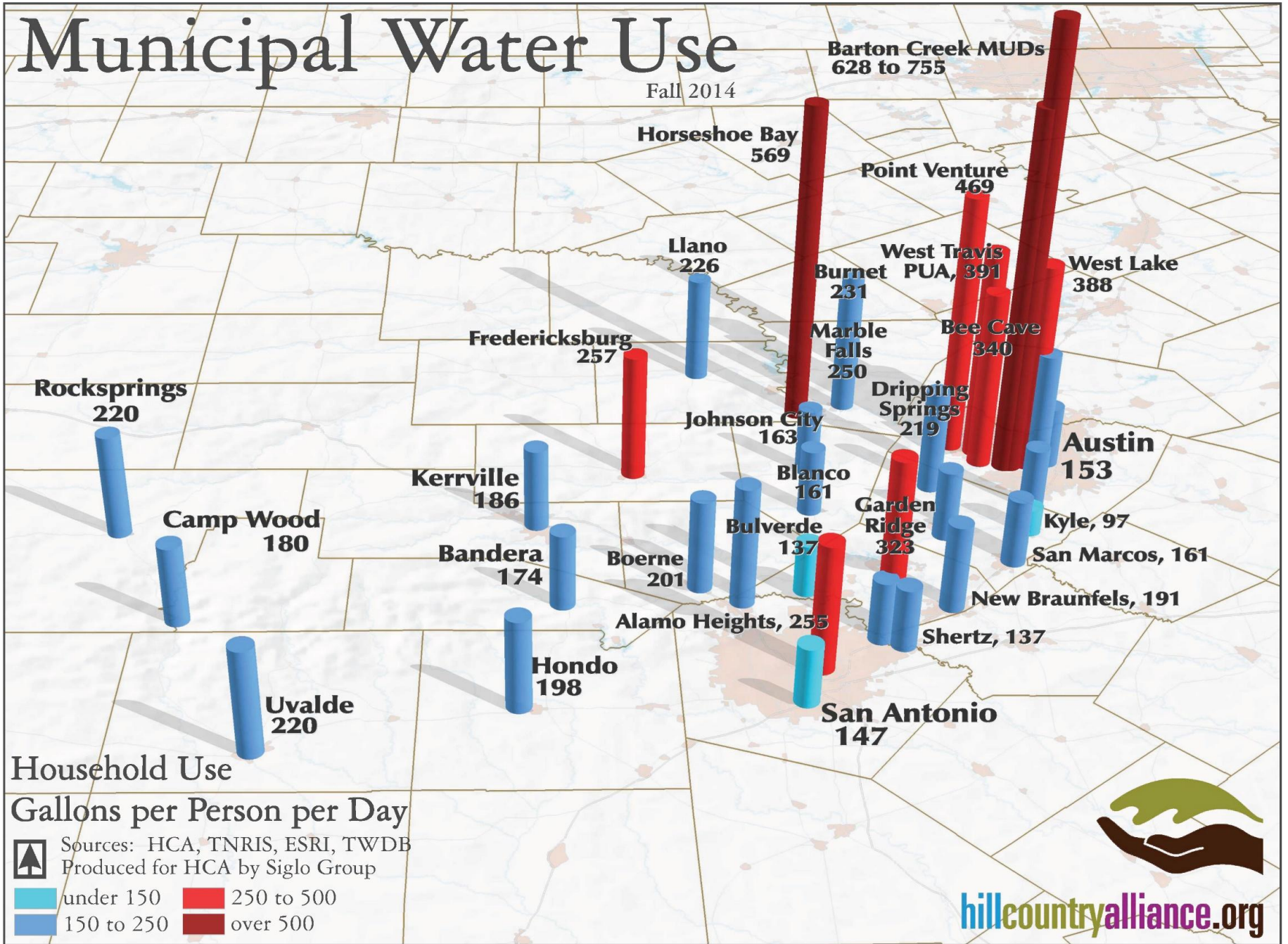
# hill country alliance

[katherine@hillcountryalliance.org](mailto:katherine@hillcountryalliance.org) | 512-410-9368



# Municipal Water Use

Fall 2014



Household Use  
Gallons per Person per Day



Sources: HCA, TNRIS, ESRI, TWDB  
Produced for HCA by Siglo Group

- under 150
- 150 to 250
- 250 to 500
- over 500









