

GUIDE TO 2015 SALES TAX PROPOSITIONS

- Edwards Aquifer Protection Program
- Greenway Trails System

MUNICIPAL ELECTION
MAY 9, 2015



CITY OF SAN ANTONIO
**EDWARDS AQUIFER
PROTECTION PROGRAM**



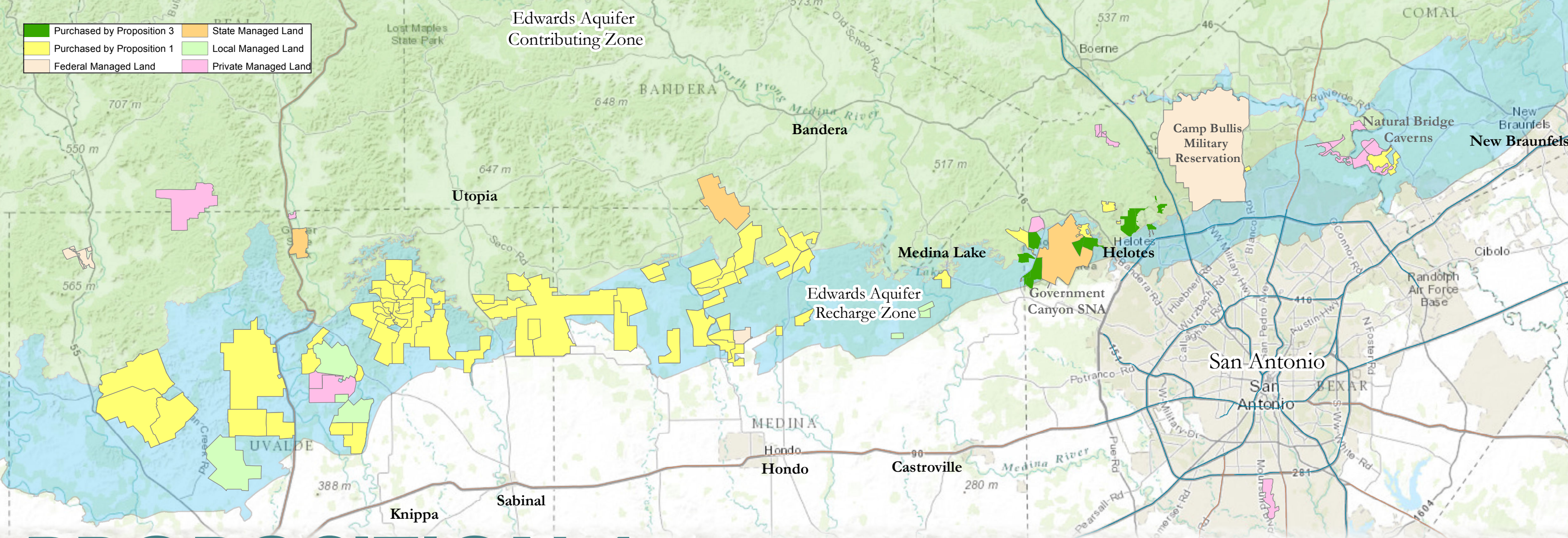
City of San Antonio

2015 GUIDE

Sales Tax Propositions 1 and 2

If approved by San Antonio voters, Propositions 1 and 2 would continue the 1/8 cent sales tax previously approved by the voters in 2000, 2005 and 2010 to provide funds to support aquifer protection and creation of linear creekway parks. This May, voters will have an opportunity to again consider whether the City may continue to impose a 1/8 cent sales tax for these venue projects. Approval of Proposition 1 would provide \$100 million for the continuation of Edwards Aquifer protection initiatives to protect and preserve the primary source of water for San Antonio residents. Of the \$100 million, \$90 million would continue to be used toward the purchase of conservation easements and land protection over the sensitive recharge and contributing zones of the aquifer, while \$10 million would be dedicated for aquifer protection projects within urbanized areas exclusively in Bexar County. Proposition 2 would provide funding in the amount of \$80 million to preserve additional open space and continue the development of hike and bike trails along San Antonio's creekways and tributaries, and would include, to the extent possible and practical, watershed and water quality protection efforts when development parks improvements. The continued collection of the 1/8 cent sales tax would fund both Proposition 1 and Proposition 2. This sales tax equates to one cent for every eight dollars spent on taxable goods and services. Taxable goods and service include most purchases such as clothing, furniture, or electronics. It does not include most personal services such as most medicine or health services. Tourists would also support Propositions 1 and 2 through the taxes collected on the taxable goods and services they purchase in San Antonio. This sales tax would be collected until all funds specified for each project have been collected (Proposition 1 - **\$100 million**; Proposition 2 - **\$80 million**).





PROPOSITION 1

The Edwards Aquifer Protection Venue Project

Proposition 1, the Edwards Aquifer Protection Venue Project, would authorize the City of San Antonio to continue the watershed and preservation project initiated in 2000 and continued in 2005 and 2010. The 1/8 cent sales tax would collect \$100 million for this project. The current conservation easement and land purchase portion of the venue project would continue to be funded at \$90 million. The remaining \$10 million would be dedicated for Edwards Aquifer protection projects within urbanized areas of Bexar County's recharge and contributing zones that would improve Edwards Aquifer water quality.

PROTECTING THE AQUIFER

The Edwards Aquifer is San Antonio's primary source of water and is important to the City's economic viability. Rainfall enters the aquifer through fractures, caves, sinkholes and other features replenishing the aquifer. However, development over the aquifer's recharge and contributing zones negatively impacts the quality and quantity of water entering our aquifer and reduces the number of recharge features needed to maintain San Antonio's primary water resource. While rules are in place to regulate urban or incompatible development, the most effective way to protect the aquifer is to acquire and protect sensitive and irreplaceable land located over its recharge and contributing zones.



Photo courtesy of EAA

FUN FACTS

- Before the previous elections, there was no program of this scale designed to identify and protect sensitive land located over the aquifer.
- More than 85% of drinking water used by SAWS customers comes from the Edwards Aquifer.
- Uvalde, Medina and Bexar Counties make up 63% of the sensitive recharge zone for the Edwards Aquifer.
- 70% of the total annual recharge for the Edwards Aquifer originates in Medina and Uvalde counties.
- Streams and watersheds located in the contributing zone north of Bexar County play a vital role in the water quality that enters the Edwards Aquifer.
- The City has been able to protect 133,447 acres (and counting) of the Edwards Aquifer through the current program. This equates to 13% of the entire Edwards Aquifer recharge zone or 20.5% of the recharge zone that directly impacts the City of San Antonio.
- Protected properties range in size from 50 to 16,000 acres and are located primarily over the Edwards Aquifer recharge zone.
- Community advisory teams comprised of geologists, hydrologists, and other aquifer experts prioritize undeveloped properties over the relevant sections of the Edwards Aquifer based on their environmental characteristics in order to achieve maximum value for voter-approved dollars.
- Funds approved and collected through Proposition 1 would be used to purchase land or interest in land to continue the Edwards Aquifer protection initiative, monitor the condition of those lands in perpetuity, preserve the most environmentally sensitive properties located over the aquifer inside and outside of Bexar County, and to develop Edwards Aquifer protection projects exclusively in Bexar County.

PROPOSITION 2

The Parks Development and Expansion Venue Project proposition (Linear Creekway Parks)

Proposition 2, the Parks Development and Expansion Venue Project, authorizes the City of San Antonio to acquire open space and develop linear parks along San Antonio's creekways, specifically including Leon Creek, Salado Creek, Medina River, San Antonio River, and tributaries, such as the Apache, Alazan, Culebra, Huesta, Huebner, Lorence, Martinez, Olmos, and San Pedro creeks. These new linear parks will become part of the municipal park system and include hike and bike trails, trailheads, signage and other related park improvements.

The Linear Creekway Parks Development Program would be funded at \$80 million. The entire allocation will be dedicated toward the existing program objectives, including expansion of the current linear park system and creation of linear creekway parks in new locations, and would include, to the extent possible and practical, watershed and water quality protection efforts when developing parks improvements within the re-authorized venue project.



San Antonio voters approved sales tax propositions in 2000, 2005, and 2010 to acquire open space and create linear parks along Leon Creek, Salado Creek, Medina River, San Antonio River, and tributaries such as the Apache, Alazan, Culebra, Huesta, Huebner, Martinez, Olmos, and San Pedro creeks. Linear Creekway parks offer the public an opportunity to enjoy outdoor recreation among some of San Antonio's most beautiful scenery.

The goals of the San Antonio Linear Parks Development ("Greenways") Program are to:

- ✂ Extend outdoor recreation and fitness opportunities, including hiking, biking, bird watching, and other recreational uses to all parts of San Antonio.
- ✂ Preserve riparian habitat and urban forests.
- ✂ Promote alternative transit opportunities by enhancing bike & pedestrian connectivity among neighborhoods, parks, schools, retail shopping, and employment centers.
- ✂ Increase the effectiveness of stormwater drainage by protecting San Antonio's natural floodways from encroaching development and allowing floodway maintenance crews to remove trash and woody debris.

Trail design objectives include maximizing accessibility for all potential users, creating a durable, sustainable trail that requires minimal maintenance, promoting user friendliness and safety, minimizing impact to native vegetation and wildlife, and incorporating educational signage.

With the three previous Sales Tax Parks Propositions, the City has acquired approximately 1,275 acres of environmentally sensitive lands within San Antonio's dense urban environment. The current trail system includes 46 miles of completed trail and an additional 40 miles are under way.



JOINT GENERAL AND SPECIAL ELECTION

Bexar County Political Subdivisions

MAY 9, 2015 • 9 de mayo de 2015

THE HOURS OF EARLY VOTING WILL BE:

(LAS HORAS Y FECHAS DE VOTACION ADELANTADA SERAN:)

Mon., April 27 thru Fri., May 1 **8 a.m. - 6 p.m.**

Lunes 27 de abril de 2015 hasta el viernes 1 de mayo de 2015 *8 a.m. - 6 p.m.*

Sat., May 2, 2015 **8 a.m. - 8 p.m.**

Sabado 2 de mayo de 2015 *8 a.m. - 8 p.m.*

Sun., May 3, 2015 **CLOSED**

Domingo 3 de mayo de 2015 *CERRADO*

Mon., May 4 thru Tues., May 5 **8 a.m. - 8 p.m.**

Lunes 4 de mayo de 2015 hasta el martes 5 de mayo de 2015 *8 a.m. - 8 p.m.*

APRIL 27, 2015 – MAY 5, 2015

SUN	MON	TUES	WED	THURS	FRI	SAT
26 NO VOTING	27	28	29	30	1	2
	← EARLY VOTING →					
3 NO VOTING	4	5	6	7	8	9
	← EARLY VOTING →		← NO VOTING →		→ VOTING	

Main Early Voting Location: *(Localidad Principal de Votacion Adelantada:)*

BEXAR COUNTY JUSTICE CENTER **300 Dolorosa**

DEAFLINK available at these sites

(Basement, south end across from cafeteria)

(Sotano, lado sur, frente de la cafeteria)

For more information and a complete list of Early Voting sites, contact the office of the Bexar County Elections Administrator, Jacquelyn F. Callanen, at (210) 335-VOTE (8683).

(Para mas informacion y una lista completa de los localidades de votacion adelantada, comuniquese con la oficina del Condado de Bexar Administrador de Elecciones, Jacquelyn F. Callanen, al telefono (210) 335-VOTE (8683).

