

The Reserve at Salado Creek Wastewater Permit Concerns

Mike Clifford, GEAA Technical Director

mike@aquiferalliance.org



Greater
Edwards
Aquifer
Alliance

Salado Creek Is Unique

Due to its crossing of the
Edwards Aquifer Recharge Zone
(Balcones Fault Zone)



Clear creek
Near Florence



Puddles near
FM232/FM487



Bone Dry near
Bell/Williamson
County Line



Clear creek at FM2843 Bridge

Travelling West to East/North



Reserve at Salado Creek WW Permit – Issues and Notes

Issues	Notes
Lax Permit Limits (P, N, etc.)	Developer has said they could improve upon P limit by almost 4X (40 mcg/l vs. 150 mcg/l in permit)
No Beneficial Reuse plan for effluent	70% of potable water is used for watering grass during Texas summers
Inadequate slope of Salado Creek	Treated sewage will likely pool, evaporate, and concentrate under hot Texas sun, creating toxic pools
Negative Impacts to Salado Creek + Groundwater	Toxic algae from excess P could kill livestock, pets, and contaminate Salado water supply
Stormwater/treated sewage runoff from high-density development	Will contaminate Salado Creek and Edwards aquifer
Cumulative impacts of multiple wastewater plants	Never in TX has there been so many WW plants discharging this much treated sewage into one creek
Threats to endangered species	Salado Salamander could become extinct
Overall treated sewage volume too high	Developer needs less than half permitted 700,000 gallons/day

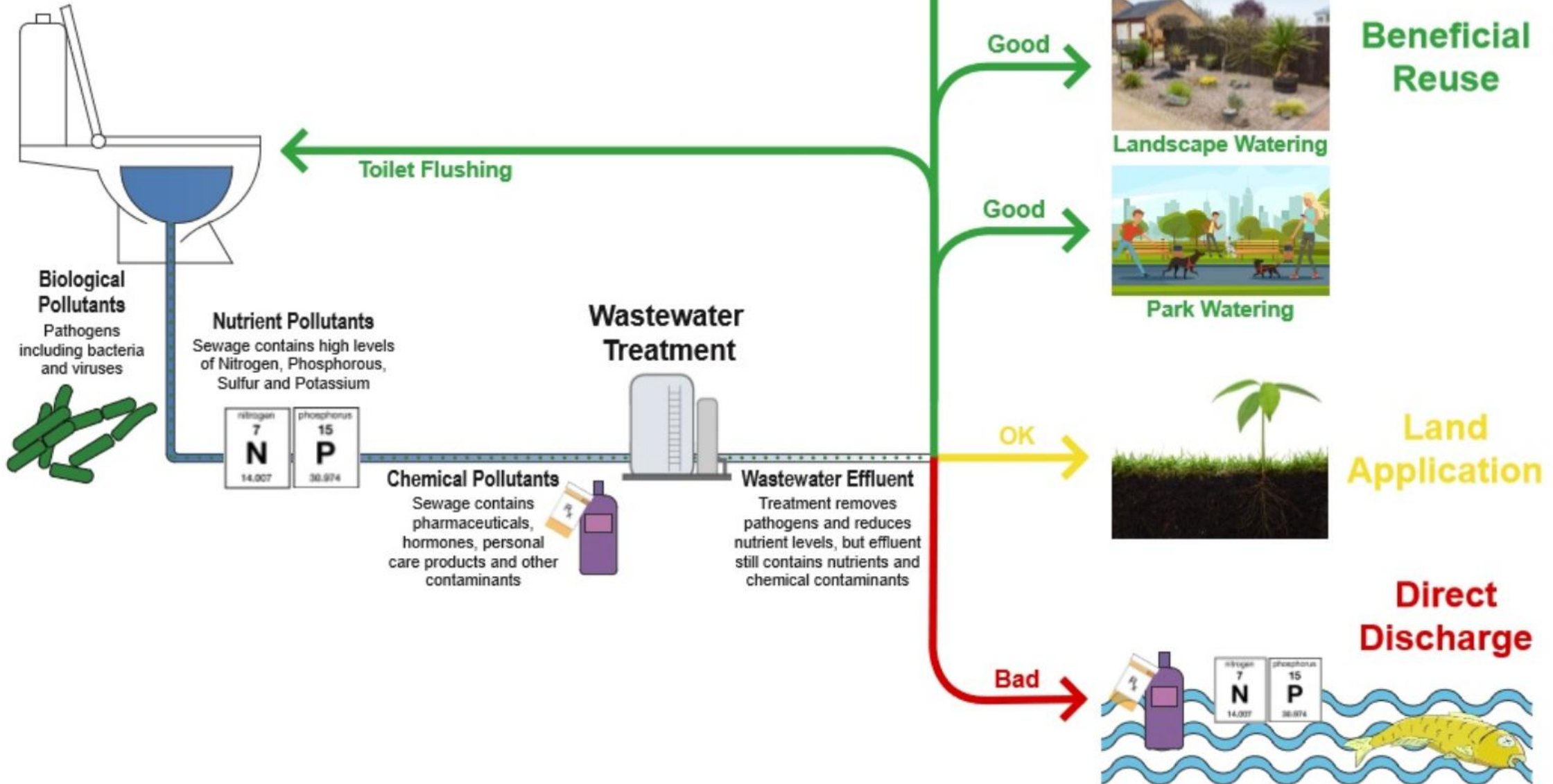
How Does Toxic Algae (Cyanotoxins) Form?

- 😞 High Phosphorous (P) Levels in water column
- 😞 Warm water temperatures
- 😞 Ample sunlight
- 😞 Slow-moving or stagnant pools of water

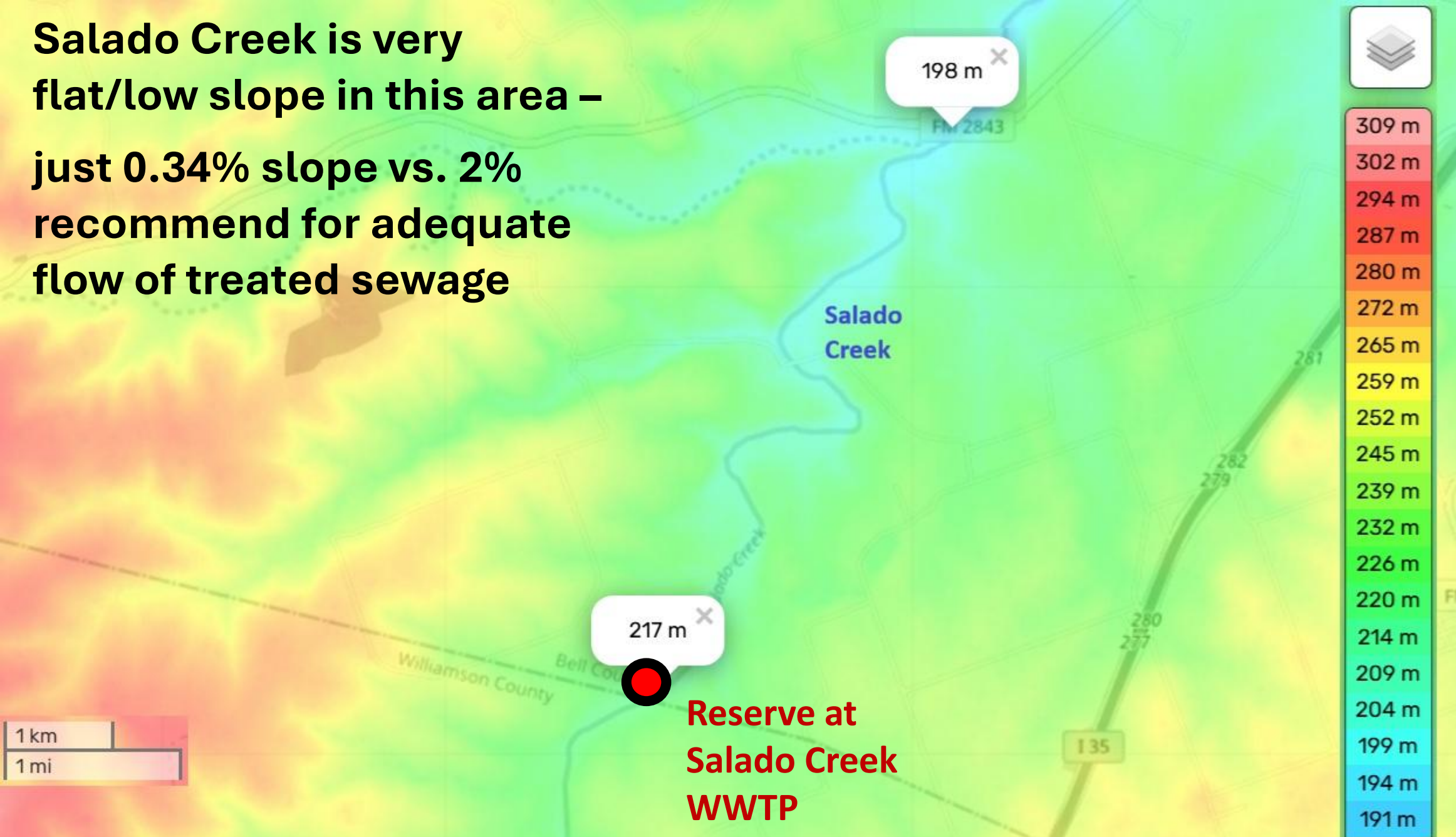
Note: Salado Water Supply Corporation, and most Texas water providers, currently do not test for cyanotoxins

The Wastewater Cycle

And Beneficial Reuse



Salado Creek is very flat/low slope in this area – just 0.34% slope vs. 2% recommend for adequate flow of treated sewage



Groundwater Flow and Water Wells (shown as purple dots)

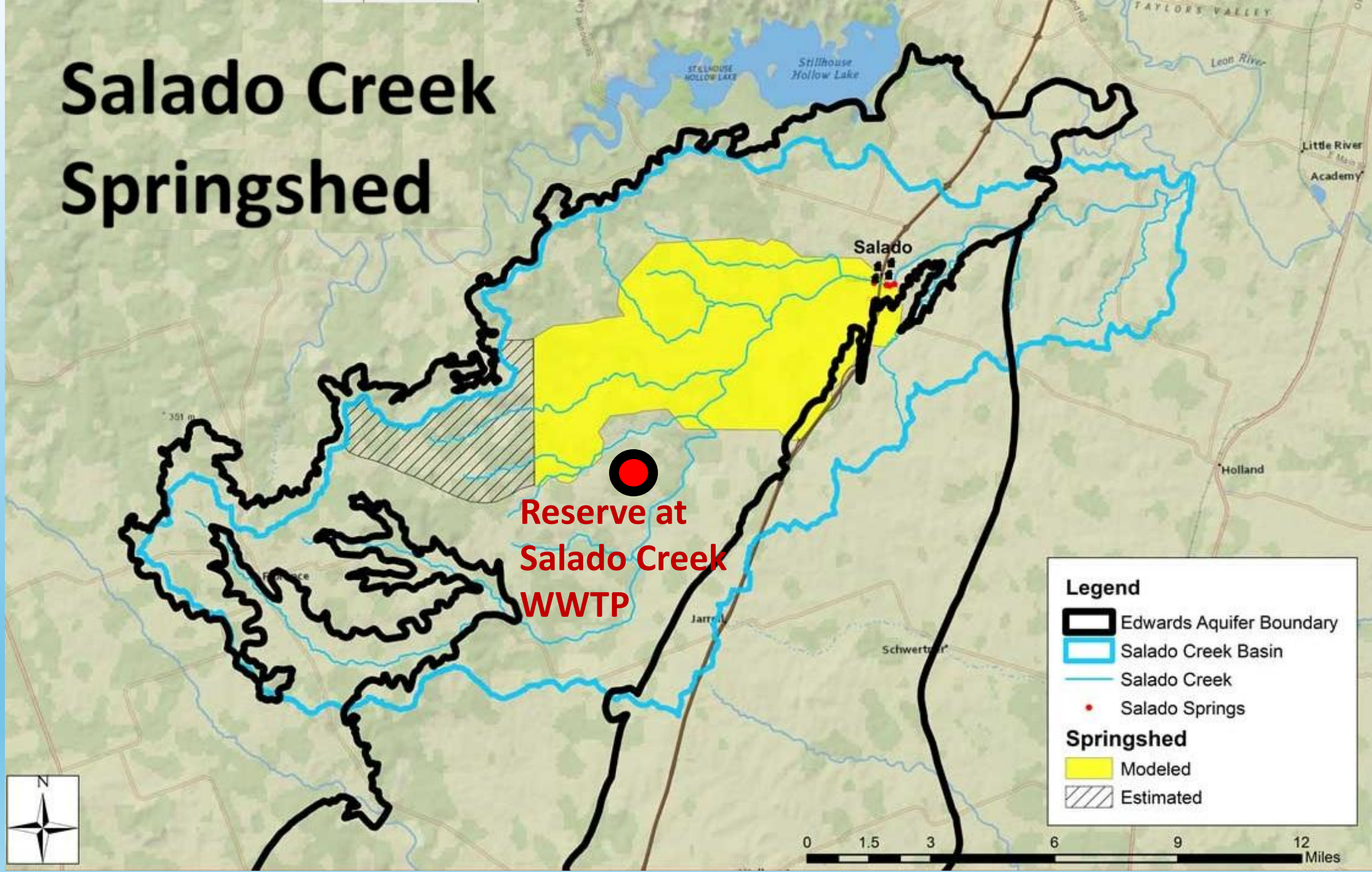
Groundwater Flow (indicated by blue arrows pointing towards the Salado Creek)

Reserve at Salado Creek WWTP (indicated by a red dot)

The map displays the Salado Creek Watershed with various roads (e.g., Thomas Arnold Rd, FM 241, FM 2843, Frontage Rd, Hackberry Rd, Bear Rd, FM 2175, FM 2415, FM 2416, FM 2417, FM 2418, FM 2419, FM 2420, FM 2421, FM 2422, FM 2423, FM 2424, FM 2425, FM 2426, FM 2427, FM 2428, FM 2429, FM 2430, FM 2431, FM 2432, FM 2433, FM 2434, FM 2435, FM 2436, FM 2437, FM 2438, FM 2439, FM 2440, FM 2441, FM 2442, FM 2443, FM 2444, FM 2445, FM 2446, FM 2447, FM 2448, FM 2449, FM 2450, FM 2451, FM 2452, FM 2453, FM 2454, FM 2455, FM 2456, FM 2457, FM 2458, FM 2459, FM 2460, FM 2461, FM 2462, FM 2463, FM 2464, FM 2465, FM 2466, FM 2467, FM 2468, FM 2469, FM 2470, FM 2471, FM 2472, FM 2473, FM 2474, FM 2475, FM 2476, FM 2477, FM 2478, FM 2479, FM 2480, FM 2481, FM 2482, FM 2483, FM 2484, FM 2485, FM 2486, FM 2487, FM 2488, FM 2489, FM 2490, FM 2491, FM 2492, FM 2493, FM 2494, FM 2495, FM 2496, FM 2497, FM 2498, FM 2499, FM 2500, FM 2501, FM 2502, FM 2503, FM 2504, FM 2505, FM 2506, FM 2507, FM 2508, FM 2509, FM 2510, FM 2511, FM 2512, FM 2513, FM 2514, FM 2515, FM 2516, FM 2517, FM 2518, FM 2519, FM 2520, FM 2521, FM 2522, FM 2523, FM 2524, FM 2525, FM 2526, FM 2527, FM 2528, FM 2529, FM 2530, FM 2531, FM 2532, FM 2533, FM 2534, FM 2535, FM 2536, FM 2537, FM 2538, FM 2539, FM 2540, FM 2541, FM 2542, FM 2543, FM 2544, FM 2545, FM 2546, FM 2547, FM 2548, FM 2549, FM 2550, FM 2551, FM 2552, FM 2553, FM 2554, FM 2555, FM 2556, FM 2557, FM 2558, FM 2559, FM 2560, FM 2561, FM 2562, FM 2563, FM 2564, FM 2565, FM 2566, FM 2567, FM 2568, FM 2569, FM 2570, FM 2571, FM 2572, FM 2573, FM 2574, FM 2575, FM 2576, FM 2577, FM 2578, FM 2579, FM 2580, FM 2581, FM 2582, FM 2583, FM 2584, FM 2585, FM 2586, FM 2587, FM 2588, FM 2589, FM 2590, FM 2591, FM 2592, FM 2593, FM 2594, FM 2595, FM 2596, FM 2597, FM 2598, FM 2599, FM 2600, FM 2601, FM 2602, FM 2603, FM 2604, FM 2605, FM 2606, FM 2607, FM 2608, FM 2609, FM 2610, FM 2611, FM 2612, FM 2613, FM 2614, FM 2615, FM 2616, FM 2617, FM 2618, FM 2619, FM 2620, FM 2621, FM 2622, FM 2623, FM 2624, FM 2625, FM 2626, FM 2627, FM 2628, FM 2629, FM 2630, FM 2631, FM 2632, FM 2633, FM 2634, FM 2635, FM 2636, FM 2637, FM 2638, FM 2639, FM 2640, FM 2641, FM 2642, FM 2643, FM 2644, FM 2645, FM 2646, FM 2647, FM 2648, FM 2649, FM 2650, FM 2651, FM 2652, FM 2653, FM 2654, FM 2655, FM 2656, FM 2657, FM 2658, FM 2659, FM 2660, FM 2661, FM 2662, FM 2663, FM 2664, FM 2665, FM 2666, FM 2667, FM 2668, FM 2669, FM 2670, FM 2671, FM 2672, FM 2673, FM 2674, FM 2675, FM 2676, FM 2677, FM 2678, FM 2679, FM 2680, FM 2681, FM 2682, FM 2683, FM 2684, FM 2685, FM 2686, FM 2687, FM 2688, FM 2689, FM 2690, FM 2691, FM 2692, FM 2693, FM 2694, FM 2695, FM 2696, FM 2697, FM 2698, FM 2699, FM 2700, FM 2701, FM 2702, FM 2703, FM 2704, FM 2705, FM 2706, FM 2707, FM 2708, FM 2709, FM 2710, FM 2711, FM 2712, FM 2713, FM 2714, FM 2715, FM 2716, FM 2717, FM 2718, FM 2719, FM 2720, FM 2721, FM 2722, FM 2723, FM 2724, FM 2725, FM 2726, FM 2727, FM 2728, FM 2729, FM 2730, FM 2731, FM 2732, FM 2733, FM 2734, FM 2735, FM 2736, FM 2737, FM 2738, FM 2739, FM 2740, FM 2741, FM 2742, FM 2743, FM 2744, FM 2745, FM 2746, FM 2747, FM 2748, FM 2749, FM 2750, FM 2751, FM 2752, FM 2753, FM 2754, FM 2755, FM 2756, FM 2757, FM 2758, FM 2759, FM 2760, FM 2761, FM 2762, FM 2763, FM 2764, FM 2765, FM 2766, FM 2767, FM 2768, FM 2769, FM 2770, FM 2771, FM 2772, FM 2773, FM 2774, FM 2775, FM 2776, FM 2777, FM 2778, FM 2779, FM 2780, FM 2781, FM 2782, FM 2783, FM 2784, FM 2785, FM 2786, FM 2787, FM 2788, FM 2789, FM 2790, FM 2791, FM 2792, FM 2793, FM 2794, FM 2795, FM 2796, FM 2797, FM 2798, FM 2799, FM 2800, FM 2801, FM 2802, FM 2803, FM 2804, FM 2805, FM 2806, FM 2807, FM 2808, FM 2809, FM 2810, FM 2811, FM 2812, FM 2813, FM 2814, FM 2815, FM 2816, FM 2817, FM 2818, FM 2819, FM 2820, FM 2821, FM 2822, FM 2823, FM 2824, FM 2825, FM 2826, FM 2827, FM 2828, FM 2829, FM 2830, FM 2831, FM 2832, FM 2833, FM 2834, FM 2835, FM 2836, FM 2837, FM 2838, FM 2839, FM 2840, FM 2841, FM 2842, FM 2843, FM 2844, FM 2845, FM 2846, FM 2847, FM 2848, FM 2849, FM 2850, FM 2851, FM 2852, FM 2853, FM 2854, FM 2855, FM 2856, FM 2857, FM 2858, FM 2859, FM 2860, FM 2861, FM 2862, FM 2863, FM 2864, FM 2865, FM 2866, FM 2867, FM 2868, FM 2869, FM 2870, FM 2871, FM 2872, FM 2873, FM 2874, FM 2875, FM 2876, FM 2877, FM 2878, FM 2879, FM 2880, FM 2881, FM 2882, FM 2883, FM 2884, FM 2885, FM 2886, FM 2887, FM 2888, FM 2889, FM 2890, FM 2891, FM 2892, FM 2893, FM 2894, FM 2895, FM 2896, FM 2897, FM 2898, FM 2899, FM 2900, FM 2901, FM 2902, FM 2903, FM 2904, FM 2905, FM 2906, FM 2907, FM 2908, FM 2909, FM 2910, FM 2911, FM 2912, FM 2913, FM 2914, FM 2915, FM 2916, FM 2917, FM 2918, FM 2919, FM 2920, FM 2921, FM 2922, FM 2923, FM 2924, FM 2925, FM 2926, FM 2927, FM 2928, FM 2929, FM 2930, FM 2931, FM 2932, FM 2933, FM 2934, FM 2935, FM 2936, FM 2937, FM 2938, FM 2939, FM 2940, FM 2941, FM 2942, FM 2943, FM 2944, FM 2945, FM 2946, FM 2947, FM 2948, FM 2949, FM 2950, FM 2951, FM 2952, FM 2953, FM 2954, FM 2955, FM 2956, FM 2957, FM 2958, FM 2959, FM 2960, FM 2961, FM 2962, FM 2963, FM 2964, FM 2965, FM 2966, FM 2967, FM 2968, FM 2969, FM 2970, FM 2971, FM 2972, FM 2973, FM 2974, FM 2975, FM 2976, FM 2977, FM 2978, FM 297

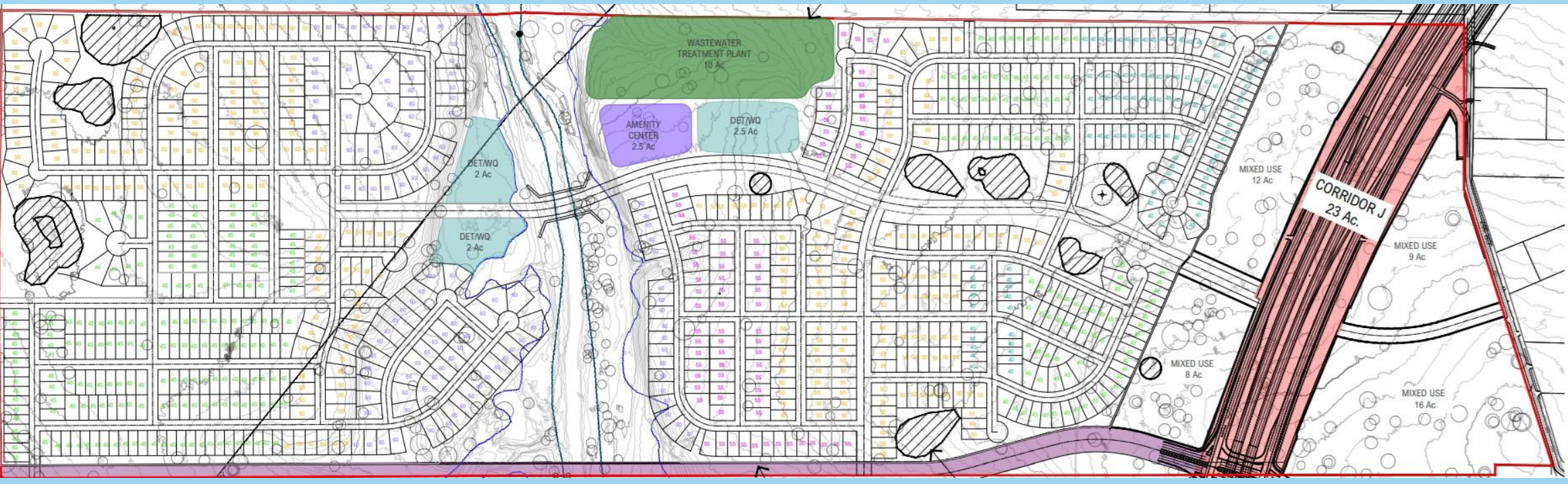
Reserve at Salado Creek WWTP

Salado Creek Springshed

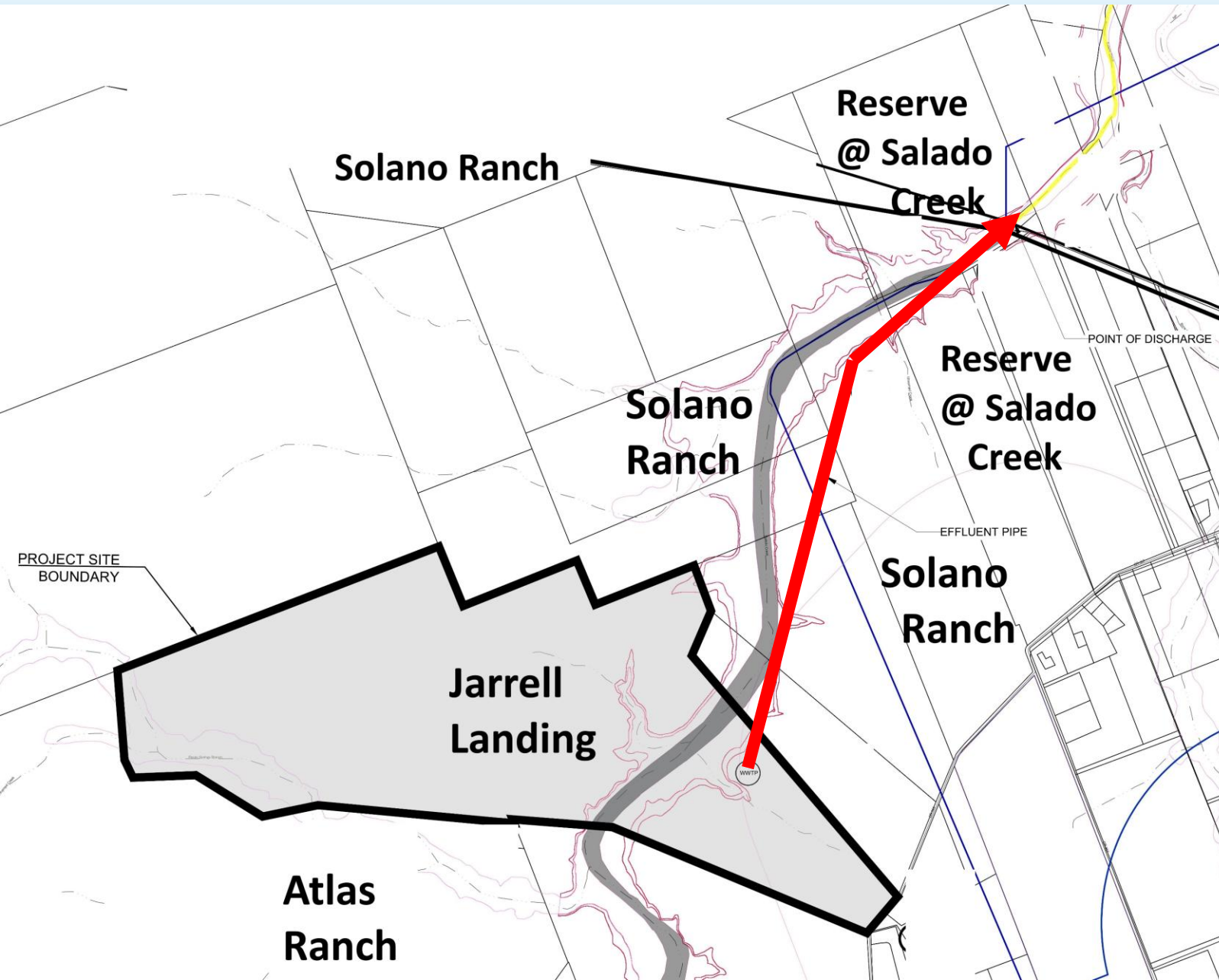


Reserve at Salado Creek Site Plan

- 🙄 High-Density: 889 homes on 1/7 to 1/10 acre lots
- 🙄 45 additional acres of commercial/mixed use
- 🙄 Almost zero green space, other than floodplain + Karst features
- 🙄 High impervious cover = stormwater runoff concerns
- 🙄 Some lots are in the Salado Creek floodplain



Jarrell Landing Treated Sewage Pipeline Fiasco



Jarrell Landing development plans to pipe 1M gal/day of treated sewage 1.6 miles to the Bell County line

Proposed outfall at exact same spot as Reserve at Salado Creek

Combined dumping of 1.7M gal/day total treated sewage into Salado Creek

Salado Creek at proposed effluent outfall location (photo take 10/13/25)



Reserve at Salado Creek begins discharging, Phase 1: 35,000 gallons/day



Chat GPT AI Rendering

Reserve at Salado Creek continues discharging, Phase 2: 350,000 gallons/day



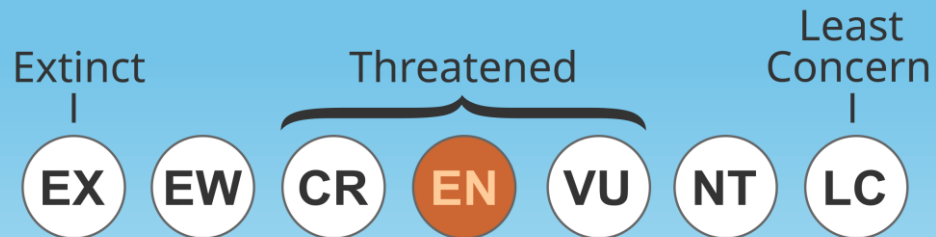
Chat GPT AI Rendering

**Reserve at Salado Creek Phase 3: 700,000 gal/ day +
Jarrell Landing discharges 999,000 gal/day**



Chat GPT AI Rendering

Salado Salamander Under Threat



Salado Salamander Springs Locations

